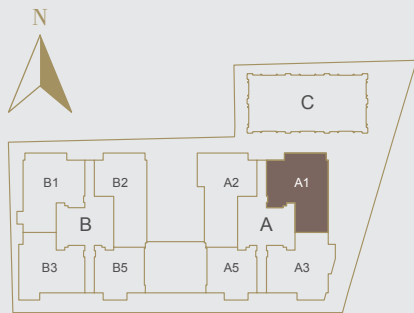
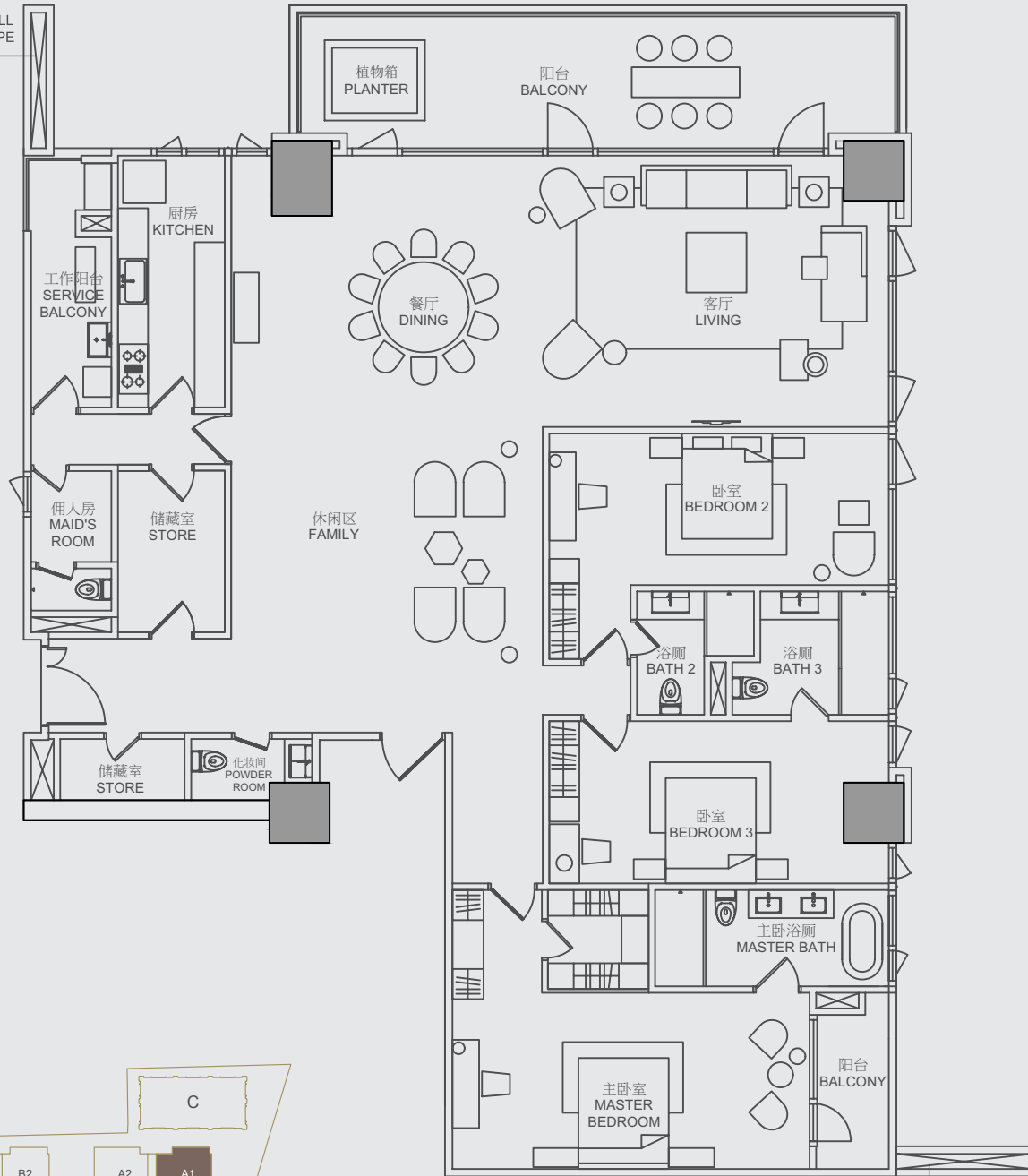


1. 管道井墙 RISER WALL
APPLICABLE TO TYPE
A1 (c)



1. 管道井墙 RISER WALL
APPLICABLE TO TYPE
A1 (c)

TYPE 类型 A1(a)

3 ENSUITE BEDROOMS + FAMILY
3 间带浴室套房 + 家庭房

NETT AREA 室内面积: 320m²

GROSS AREA 总面积: 417m²

2F | 32F

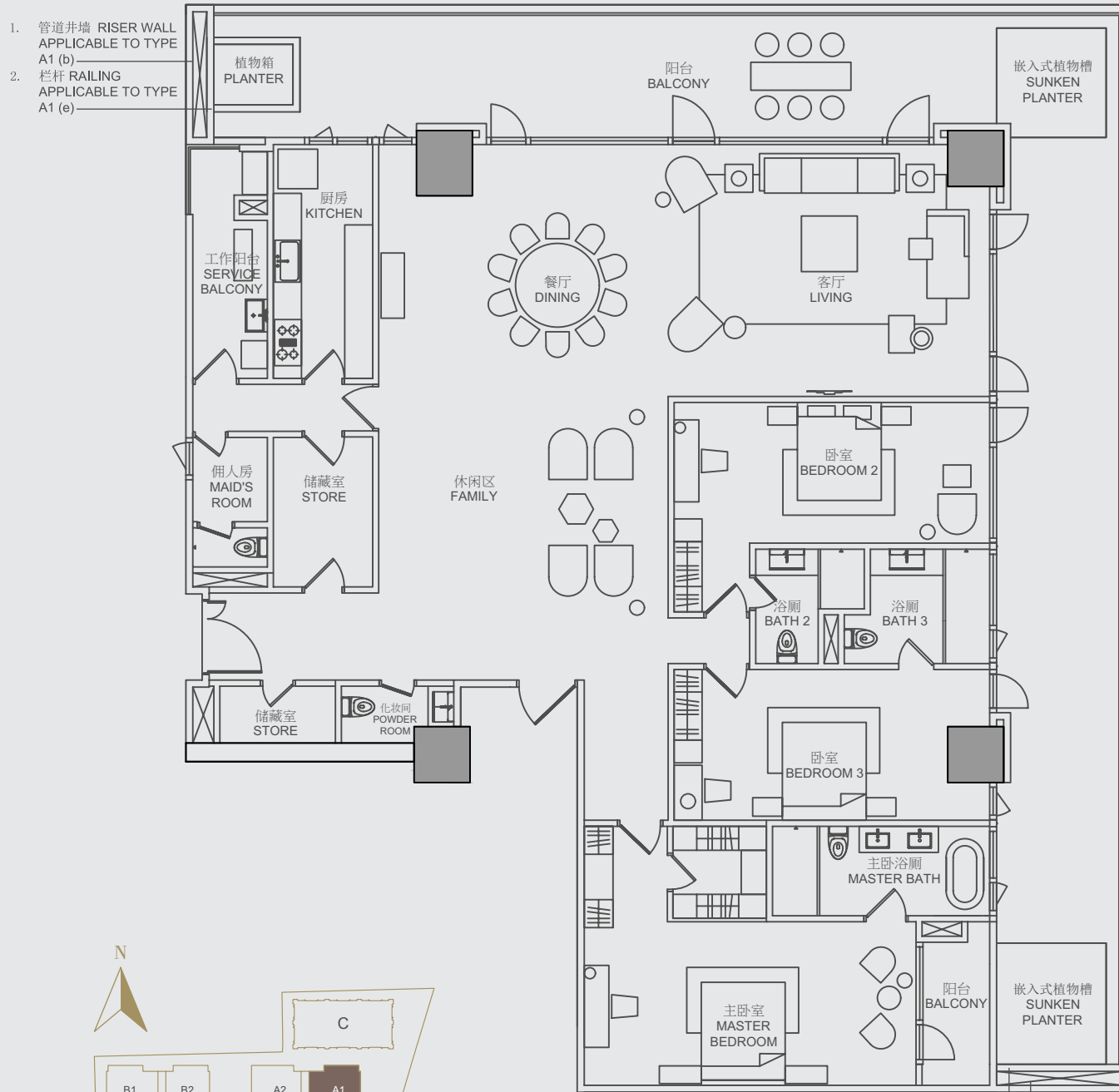
TYPE 类型 A1(c)

3 ENSUITE BEDROOMS + FAMILY
3 间带浴室套房 + 家庭房

NETT AREA 室内面积: 320m²

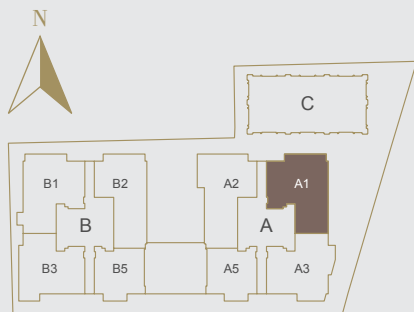
GROSS AREA 总面积: 417m²

4F | 6F | 8F | 10F | 14F | 16F | 18F
20F | 24F | 26F | 28F | 30F



1. 管道井墙 RISER WALL APPLICABLE TO TYPE A1 (b)
2. 栏杆 RAILING APPLICABLE TO TYPE A1 (e)

1. 管道井墙 RISER WALL APPLICABLE TO TYPE A1 (b)
2. 栏杆 RAILING APPLICABLE TO TYPE A1 (e)



TYPE 类型 A1(b)

3 ENSUITE BEDROOMS + FAMILY
3 间带浴室套房 + 家庭房

NETT AREA 室内面积: 394m²

GROSS AREA 总面积: 509m²

3F | 13F | 22F

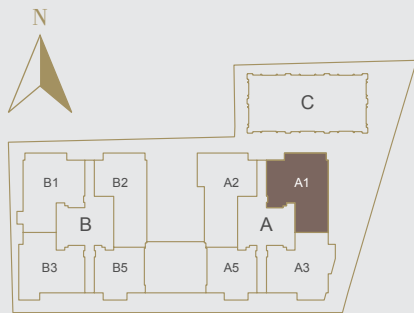
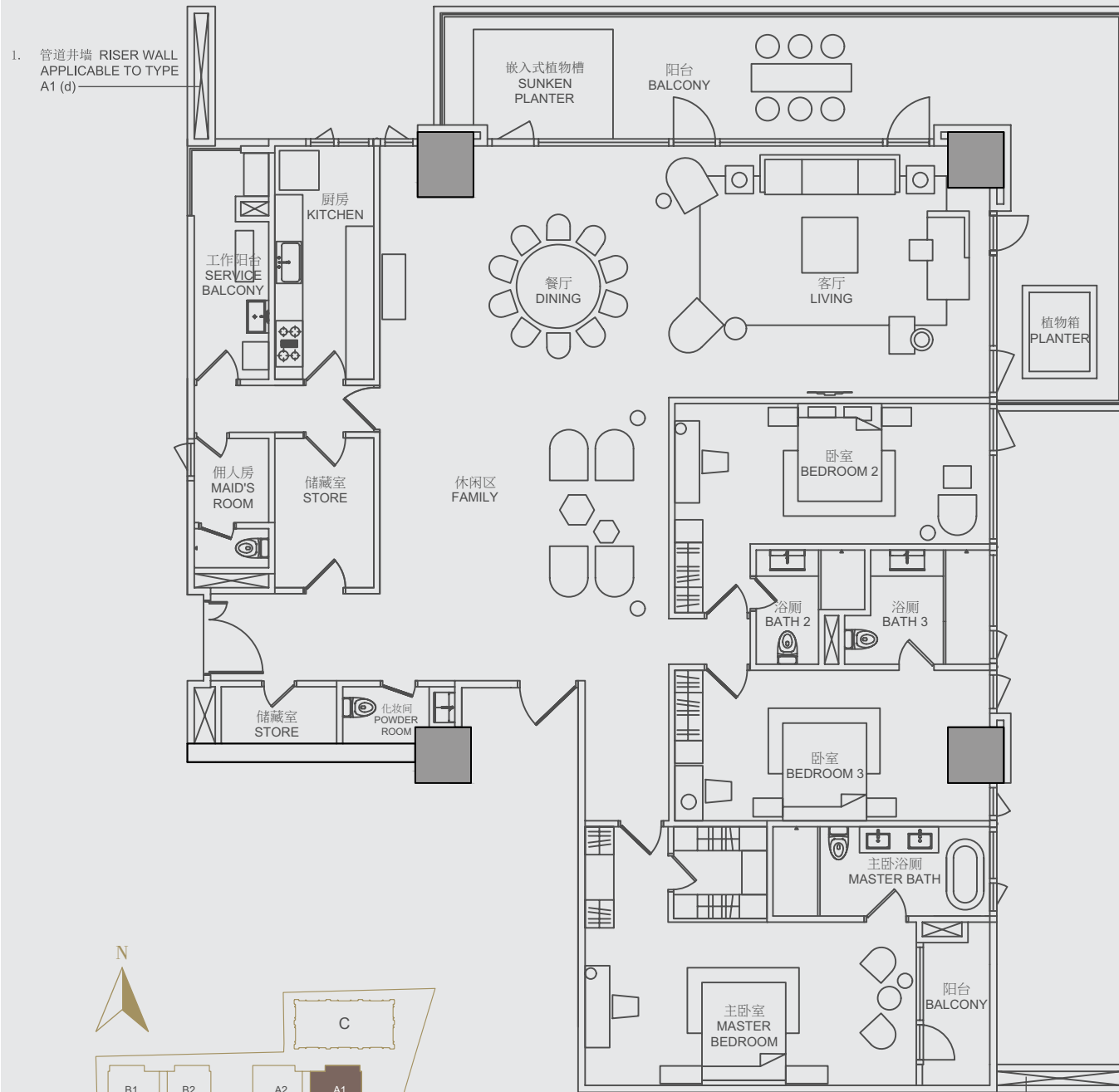
TYPE 类型 A1(e)

3 ENSUITE BEDROOMS + FAMILY
3 间带浴室套房 + 家庭房

NETT AREA 室内面积: 394m²

GROSS AREA 总面积: 509m²

12F | 21F | 31F



TYPE 类型 A1(d)

3 ENSUITE BEDROOMS + FAMILY
3 间带浴室套房 + 家庭房

NETT AREA 室内面积: 343m²

GROSS AREA 总面积: 446m²

5F | 7F | 9F | 11F | 15F | 17F
19F | 23F | 25F | 27F | 29F

TYPE 类型 A1(f)

3 ENSUITE BEDROOMS + FAMILY
3 间带浴室套房 + 家庭房

NETT AREA 室内面积: 343m²

GROSS AREA 总面积: 446m²

33F