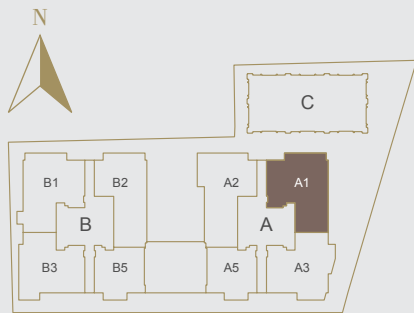
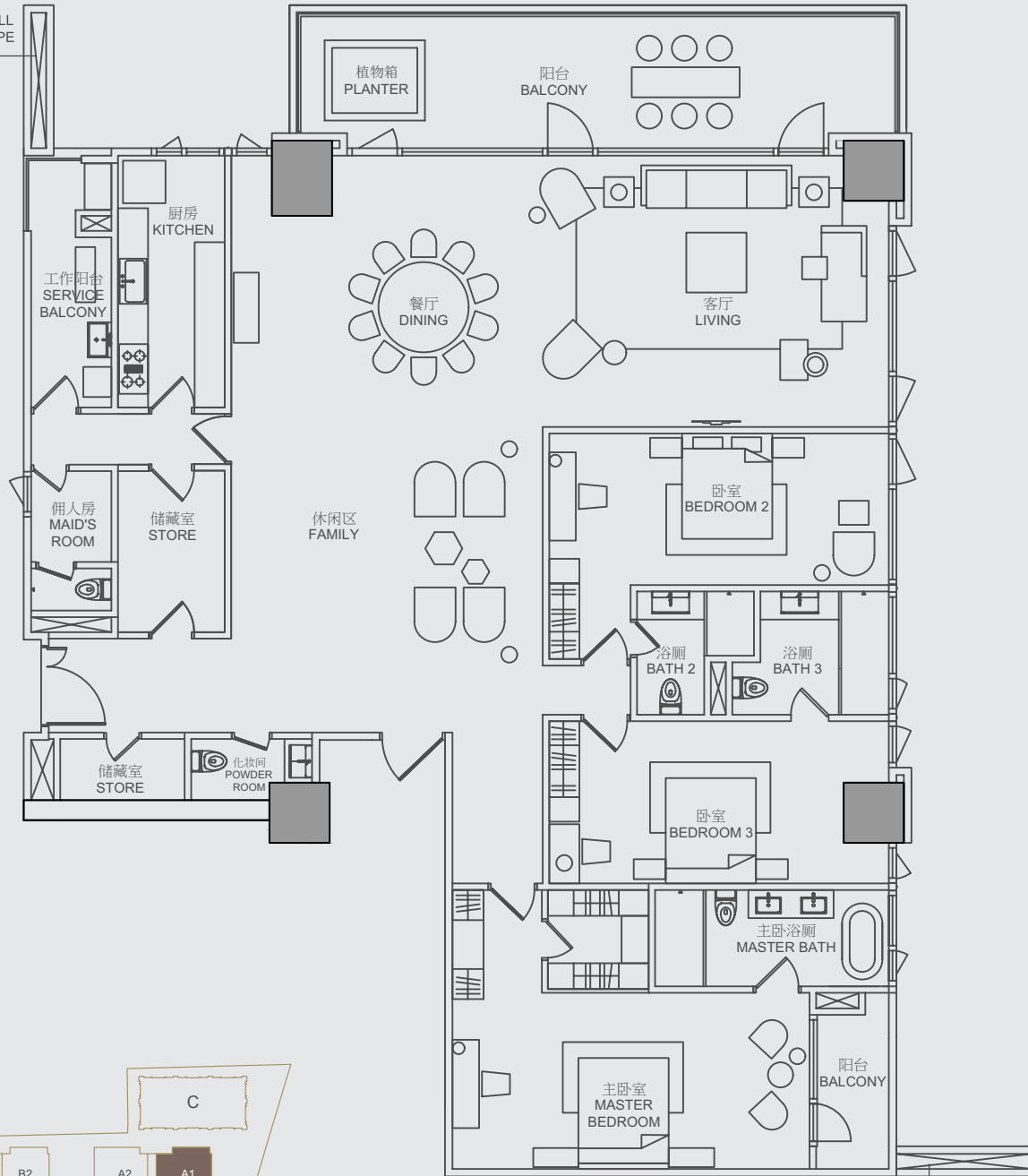


1. 管道井墙 RISER WALL  
APPLICABLE TO TYPE  
A1 (c)



1. 管道井墙 RISER WALL  
APPLICABLE TO TYPE  
A1 (c)

# TYPE 类型 A1(a)

3 ENSUITE BEDROOMS + FAMILY  
3 间带浴室套房 + 家庭房

NETT AREA 室内面积: 320m<sup>2</sup>

GROSS AREA 总面积: 417m<sup>2</sup>

2F | 32F

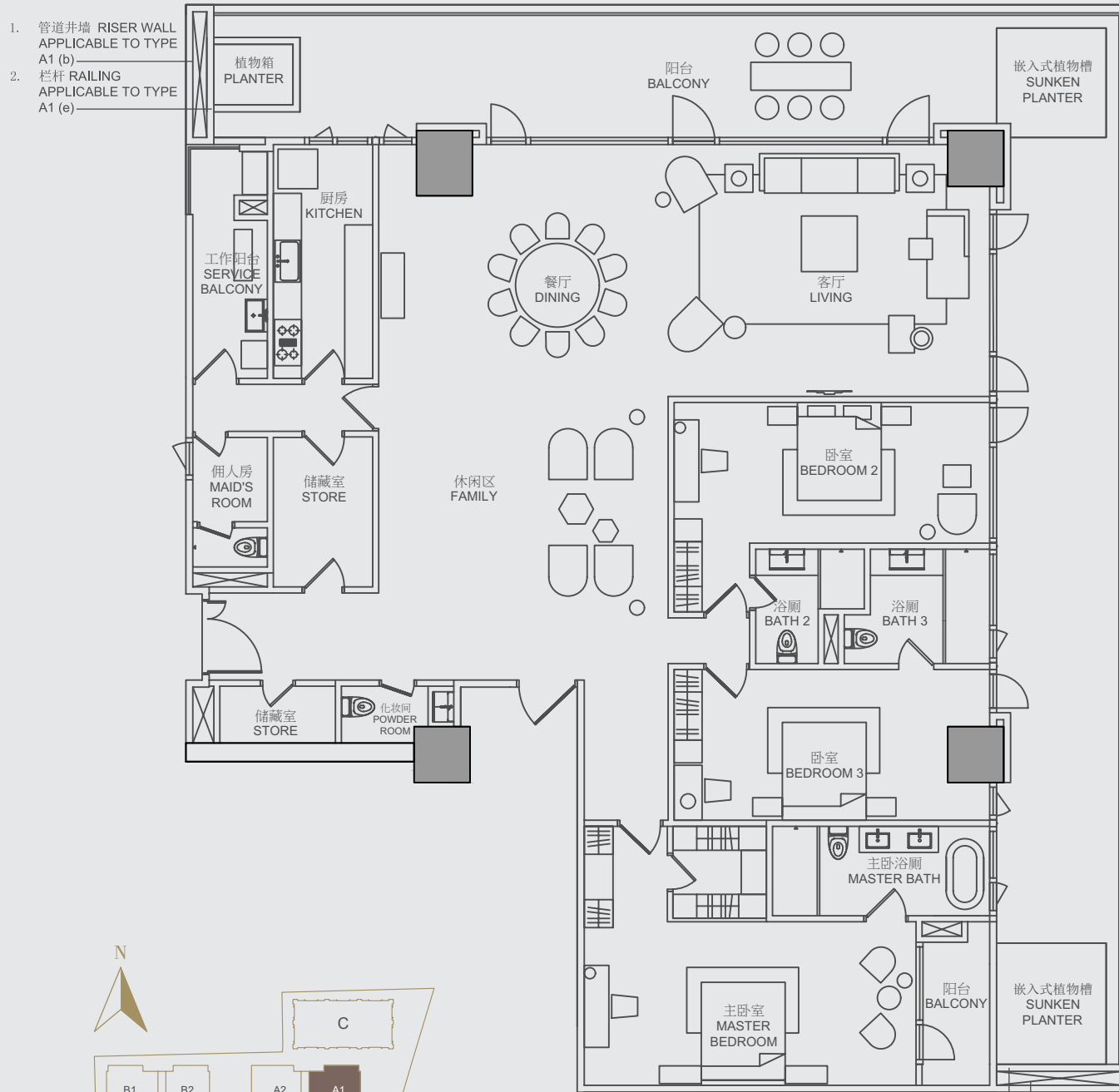
# TYPE 类型 A1(c)

3 ENSUITE BEDROOMS + FAMILY  
3 间带浴室套房 + 家庭房

NETT AREA 室内面积: 320m<sup>2</sup>

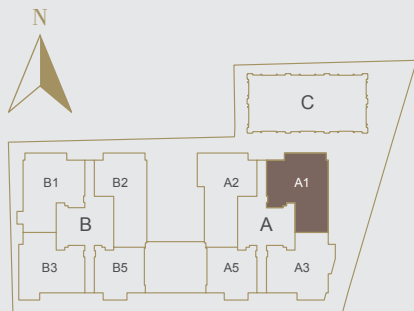
GROSS AREA 总面积: 417m<sup>2</sup>

4F | 6F | 8F | 10F | 14F | 16F | 18F  
20F | 24F | 26F | 28F | 30F



1. 管道井墙 RISER WALL APPLICABLE TO TYPE A1 (b)
2. 栏杆 RAILING APPLICABLE TO TYPE A1 (e)

1. 管道井墙 RISER WALL APPLICABLE TO TYPE A1 (b)
2. 栏杆 RAILING APPLICABLE TO TYPE A1 (e)



# TYPE 类型 A1(b)

3 ENSUITE BEDROOMS + FAMILY  
3 间带浴室套房 + 家庭房

NETT AREA 室内面积: 394m<sup>2</sup>

GROSS AREA 总面积: 509m<sup>2</sup>

3F | 13F | 22F

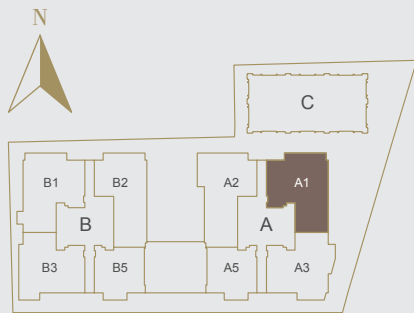
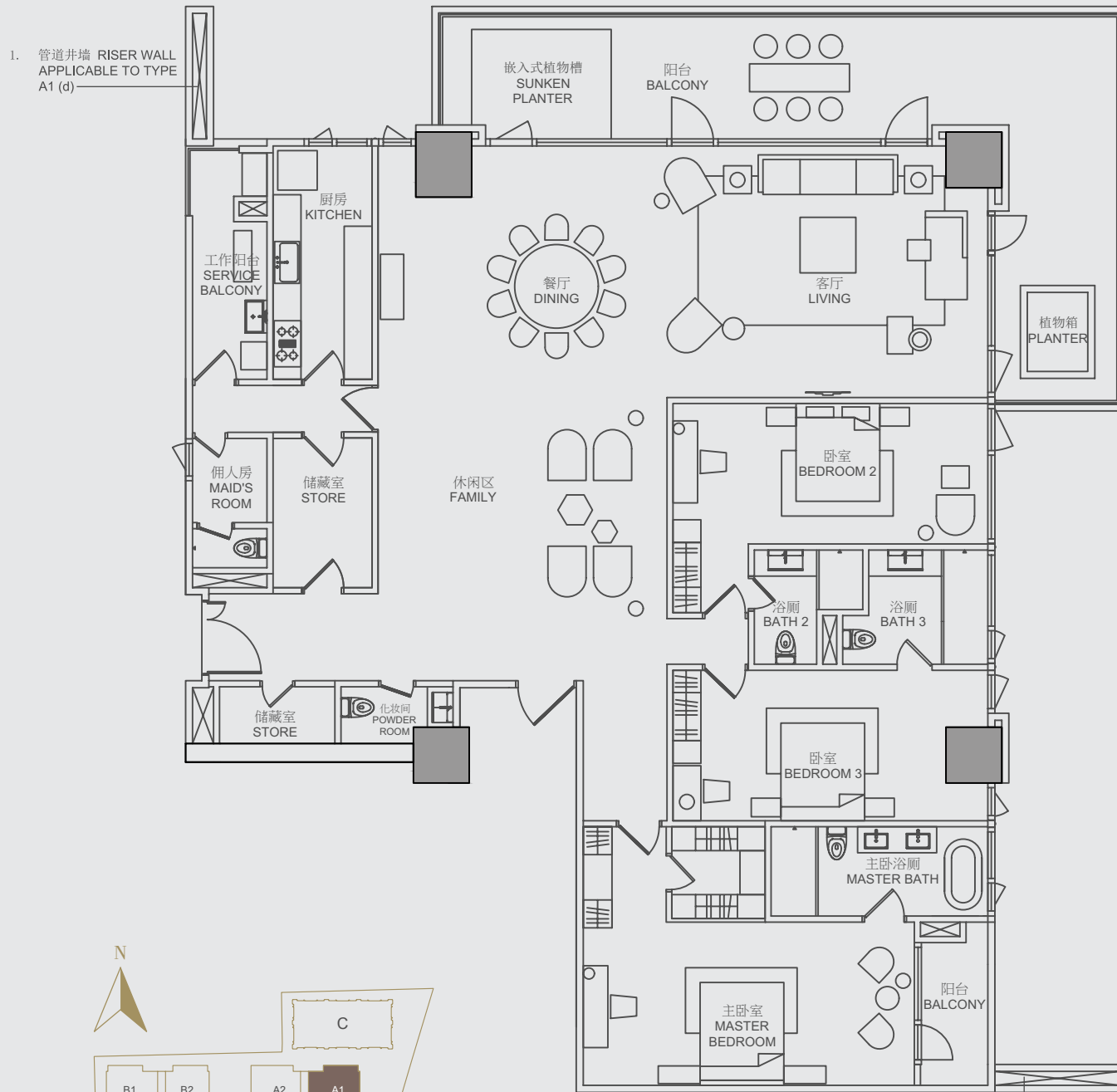
# TYPE 类型 A1(e)

3 ENSUITE BEDROOMS + FAMILY  
3 间带浴室套房 + 家庭房

NETT AREA 室内面积: 394m<sup>2</sup>

GROSS AREA 总面积: 509m<sup>2</sup>

12F | 21F | 31F



1. 管道井墙 RISER WALL APPLICABLE TO TYPE A1 (d)

# TYPE 类型 A1(d)

3 ENSUITE BEDROOMS + FAMILY  
3 间带浴室套房 + 家庭房

NETT AREA 室内面积: 343m<sup>2</sup>

GROSS AREA 总面积: 446m<sup>2</sup>

5F | 7F | 9F | 11F | 15F | 17F  
19F | 23F | 25F | 27F | 29F

# TYPE 类型 A1(f)

3 ENSUITE BEDROOMS + FAMILY  
3 间带浴室套房 + 家庭房

NETT AREA 室内面积: 343m<sup>2</sup>

GROSS AREA 总面积: 446m<sup>2</sup>

33F

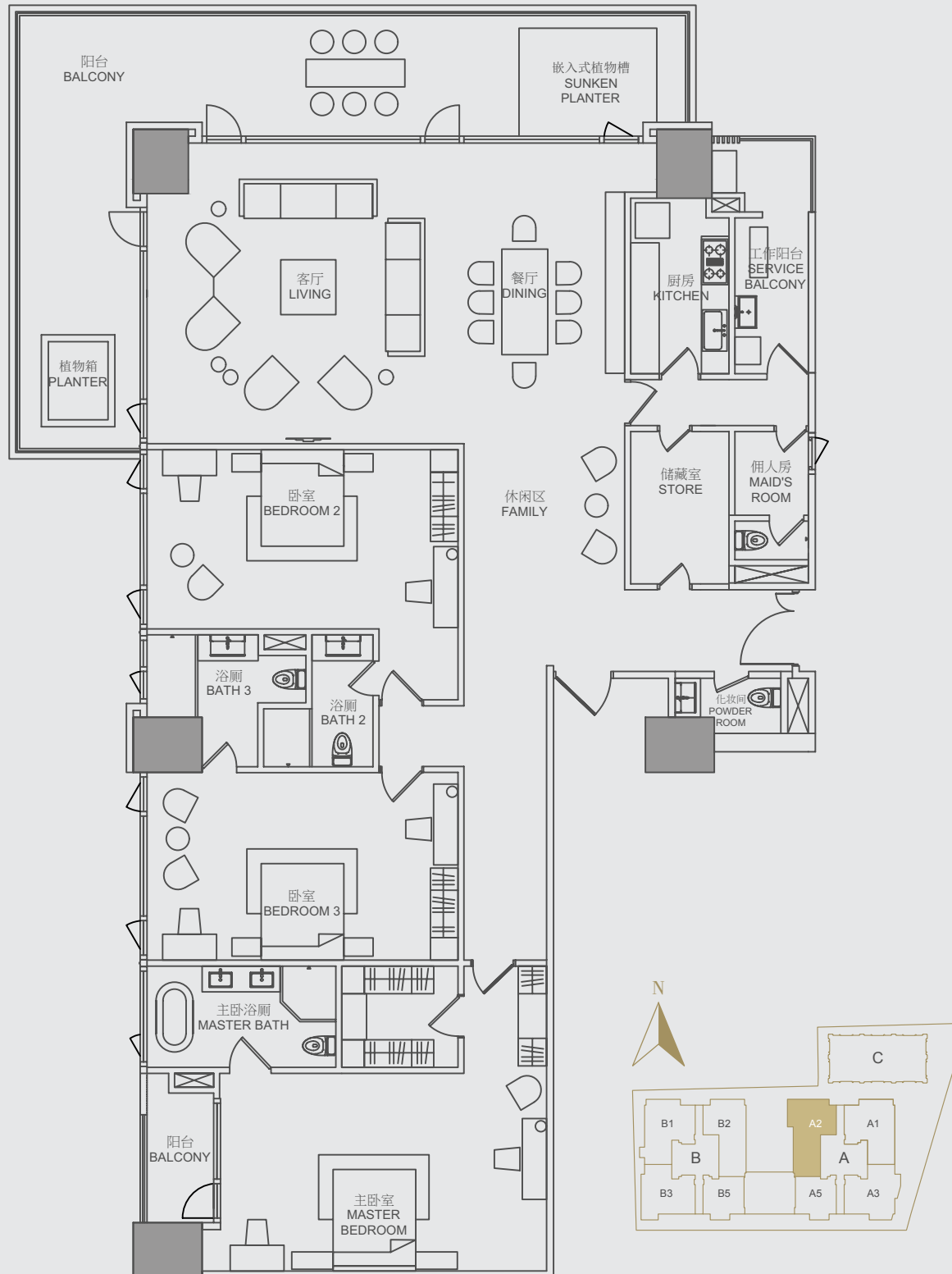
# TYPE 类型 A2(a)

3 ENSUITE BEDROOMS + FAMILY  
3 间带浴室套房 + 家庭房

NETT AREA 室内面积: 349m<sup>2</sup>

GROSS AREA 总面积: 453m<sup>2</sup>

2F | 5F | 8F | 11F | 14F | 17F  
20F | 23F | 26F | 29F | 32F



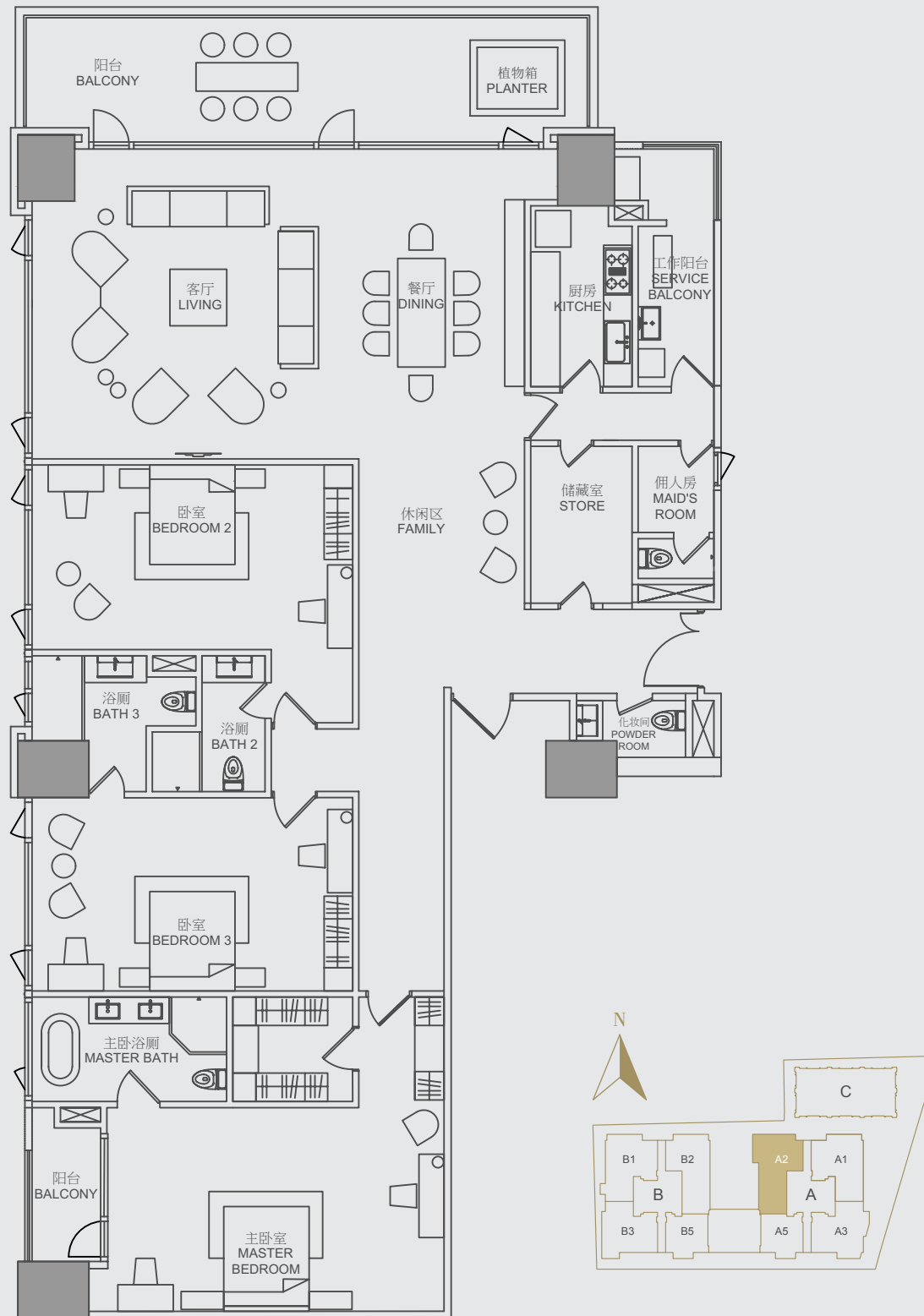
# TYPE 类型 A2(b)

3 ENSUITE BEDROOMS + FAMILY  
3 间带浴室套房 + 家庭房

NETT AREA 室内面积: 324m<sup>2</sup>

GROSS AREA 总面积: 423m<sup>2</sup>

3F | 6F | 9F | 12F | 15F | 18F  
21F | 24F | 27F | 30F | 33F



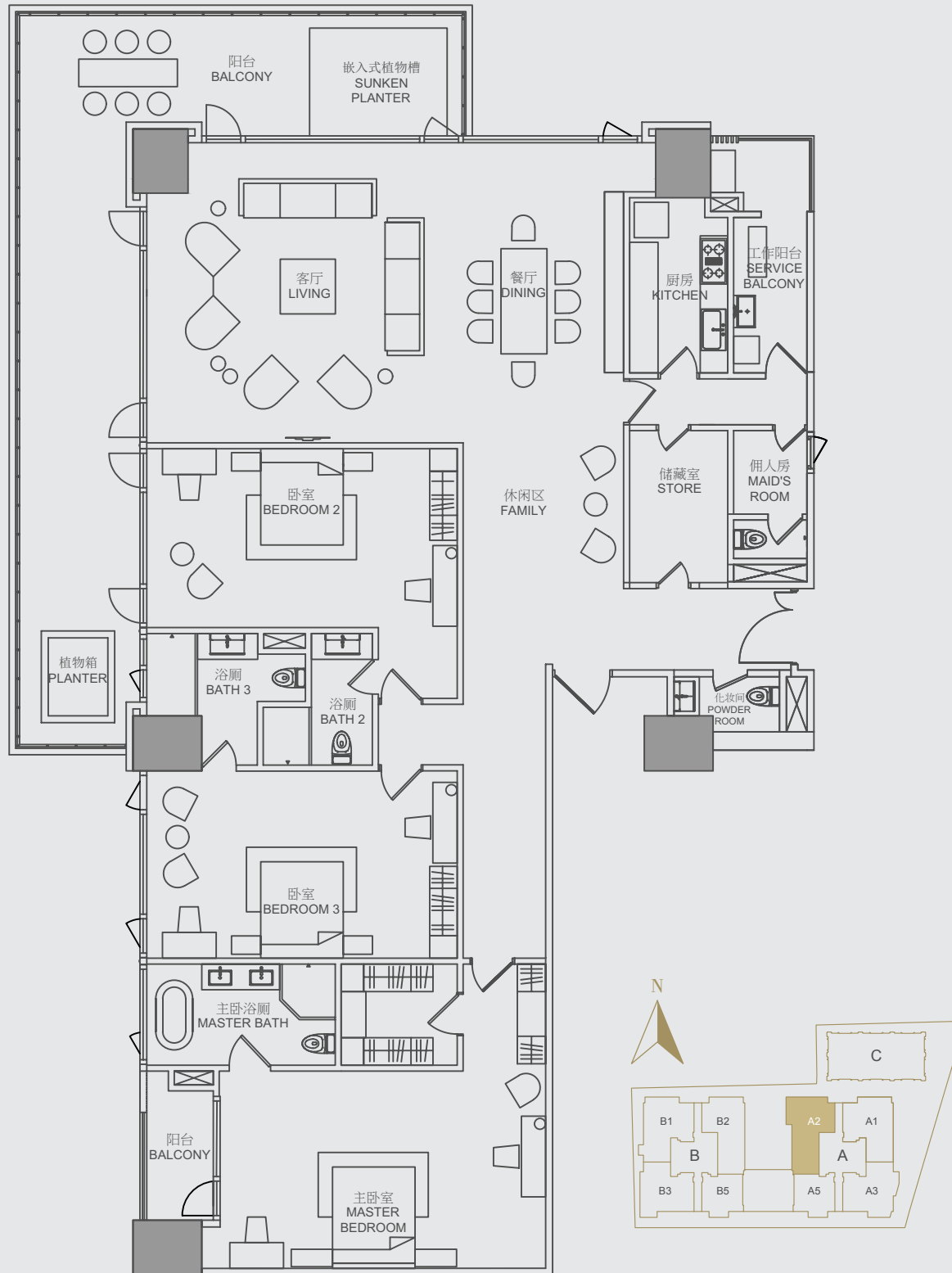
# TYPE 类型 A2(c)

3 ENSUITE BEDROOMS + FAMILY  
3 间带浴室套房 + 家庭房

NETT AREA 室内面积: 354m<sup>2</sup>

GROSS AREA 总面积: 459m<sup>2</sup>

4F | 7F | 10F | 13F | 16F | 19F  
22F | 25F | 28F | 31F



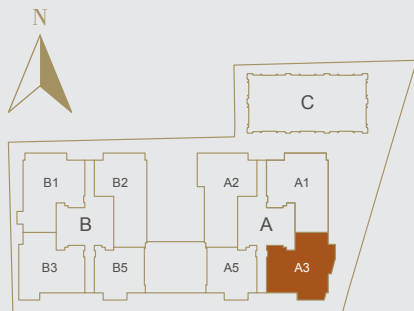
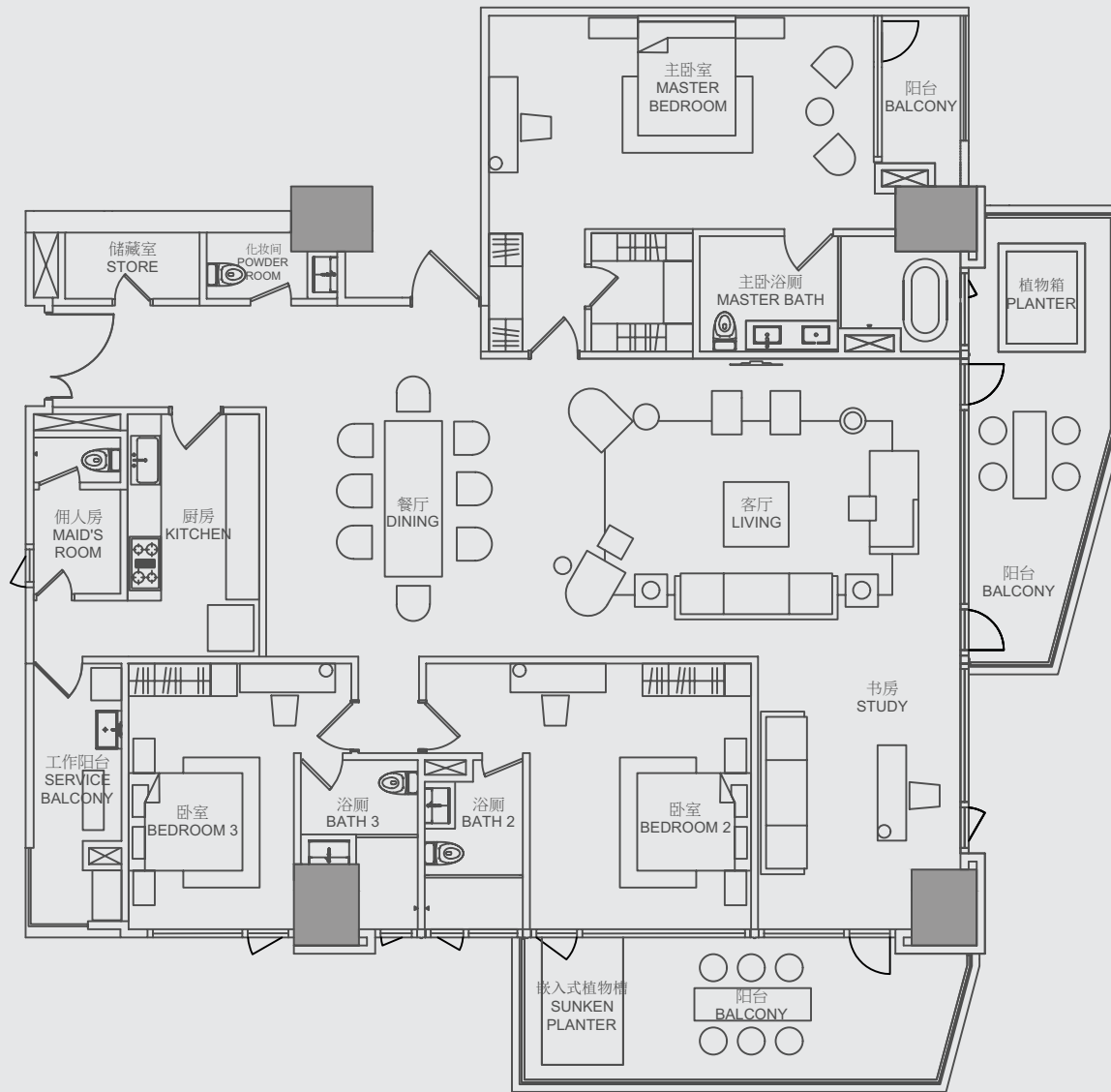
TYPE 类型  
A3(a)

3 ENSUITE BEDROOMS + STUDY  
3 间带浴室套房 + 书房

NETT AREA 室内面积: 300m<sup>2</sup>

GROSS AREA 总面积: 391m<sup>2</sup>

2F | 3F | 5F | 6F | 7F | 8F | 9F  
12F | 14F | 15F | 16F | 17F | 18F  
20F | 23F | 24F | 25F | 26F | 27F | 29F  
30F | 31F | 32F | 33F



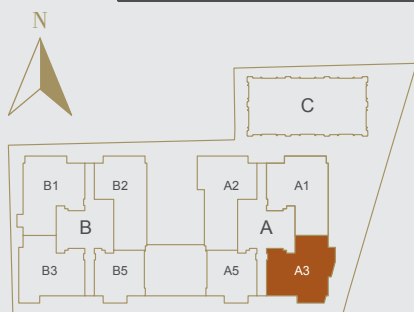
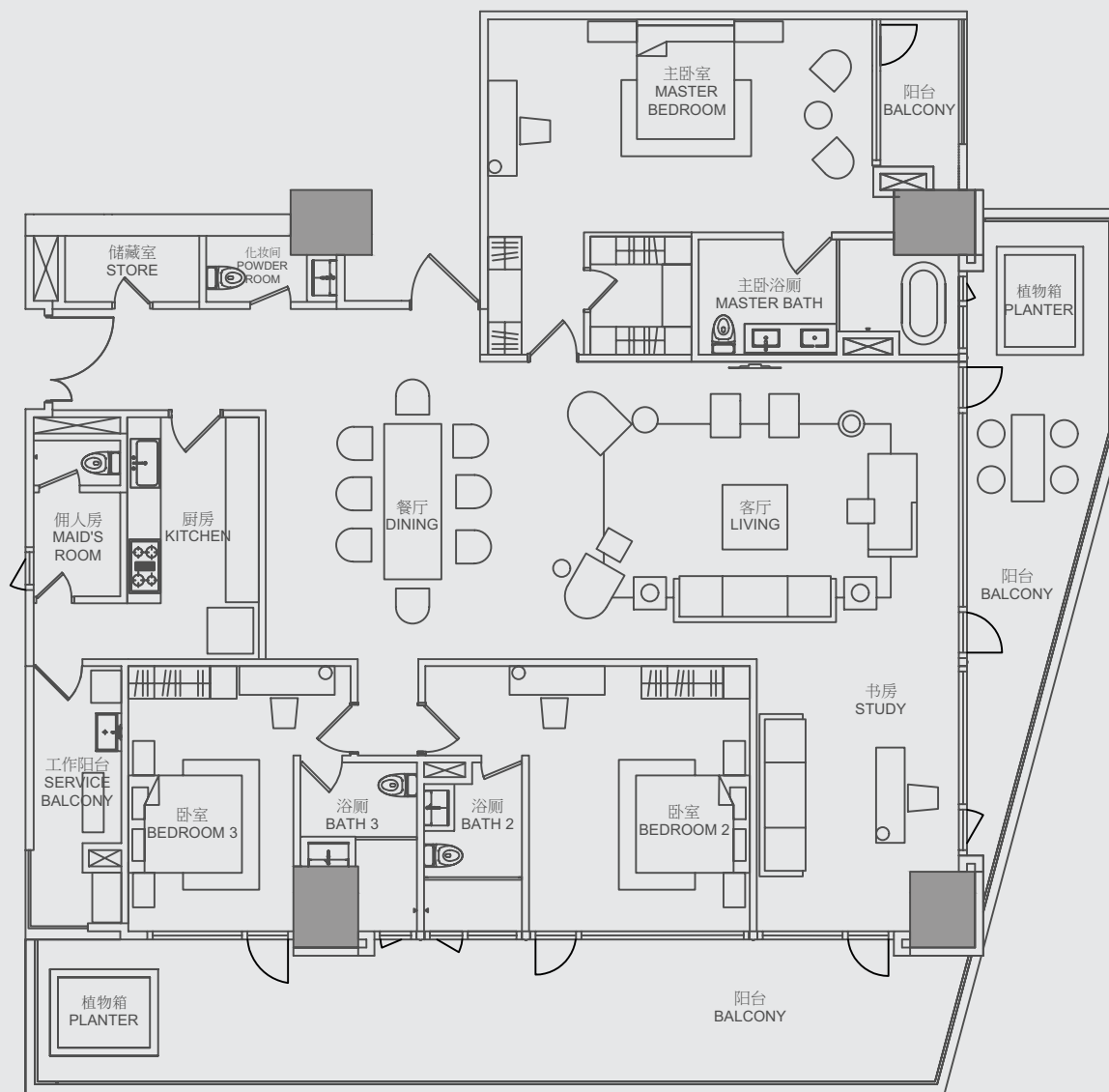
TYPE 类型  
A3(b)

3 ENSUITE BEDROOMS + STUDY  
3 间带浴室套房 + 书房

NETT AREA 室内面积: 327m<sup>2</sup>

GROSS AREA 总面积: 423m<sup>2</sup>

4F | 10F | 13F | 19F | 22F | 28F





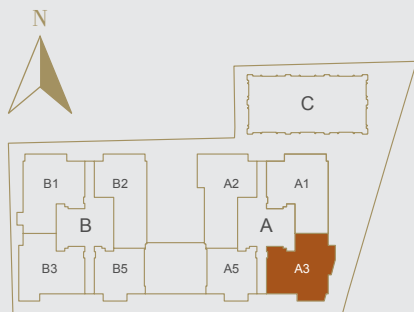
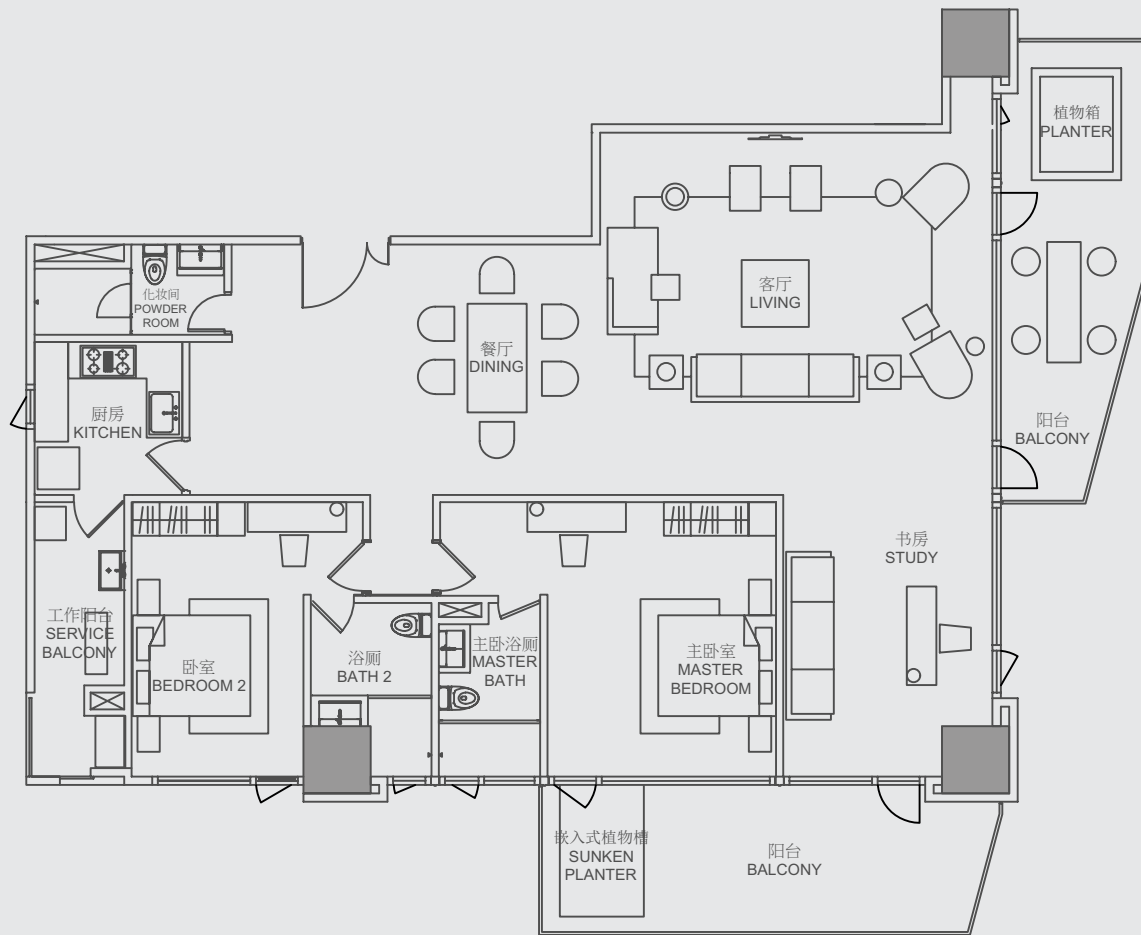
TYPE 类型  
**A3(c)**

2 ENSUITE BEDROOMS + STUDY  
 2 间带浴室套房 + 书房

NETT AREA 室内面积: 226m<sup>2</sup>

GROSS AREA 总面积: 292m<sup>2</sup>

11F | 21F



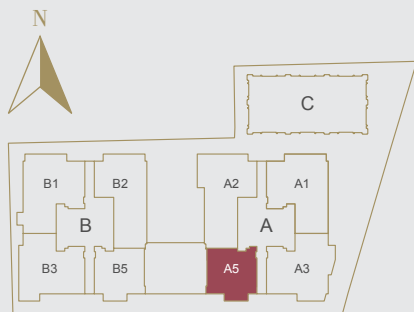
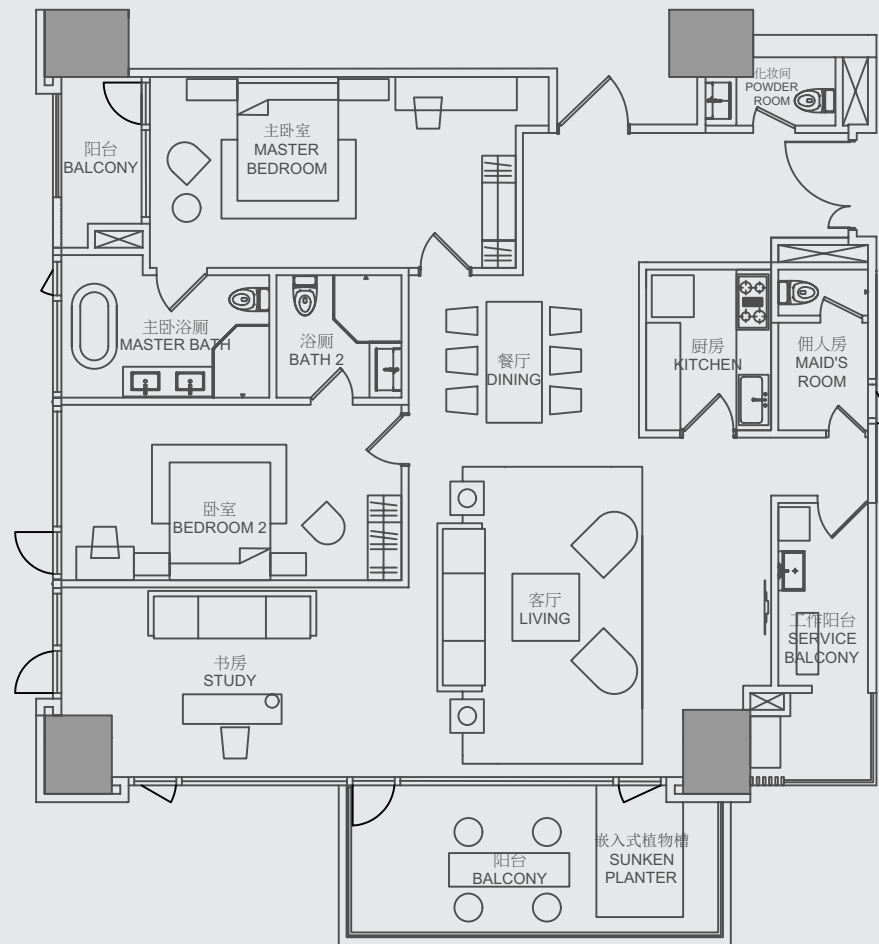
TYPE 类型  
A5(a)

2 ENSUITE BEDROOMS + STUDY  
2 间带浴室套房 + 书房

NETT AREA 室内面积: 259m<sup>2</sup>

GROSS AREA 总面积: 336m<sup>2</sup>

2F



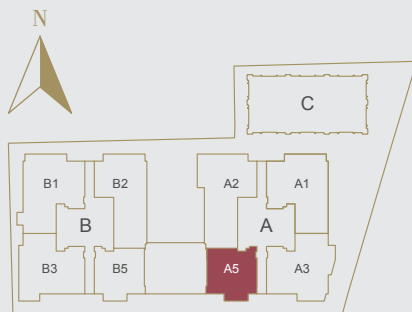
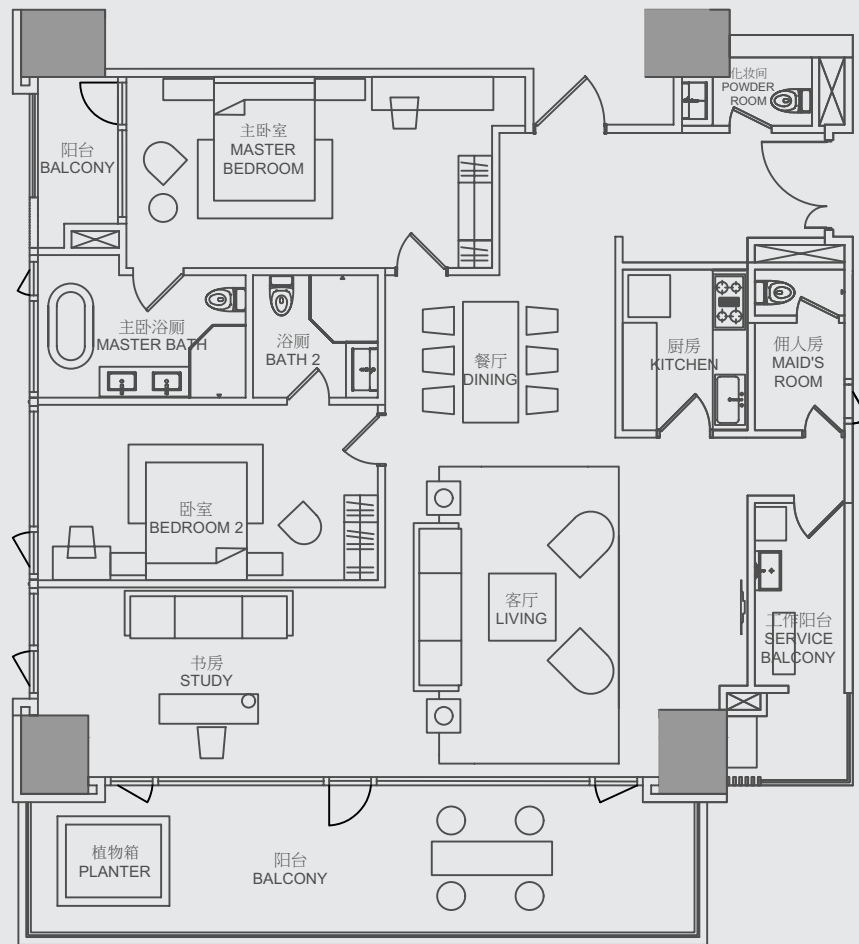
# TYPE 类型 A5(b)

2 ENSUITE BEDROOMS + STUDY  
2 间带浴室套房 + 书房

NETT AREA 室内面积: 216m<sup>2</sup>

GROSS AREA 总面积: 281m<sup>2</sup>

3F | 6F | 9F | 12F | 15F | 18F  
21F | 24F | 27F | 30F | 33F



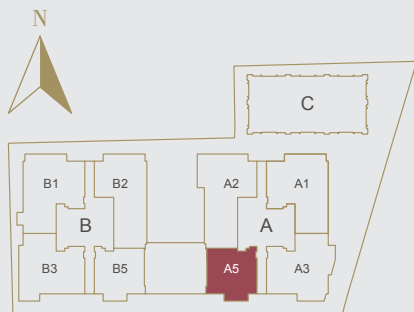
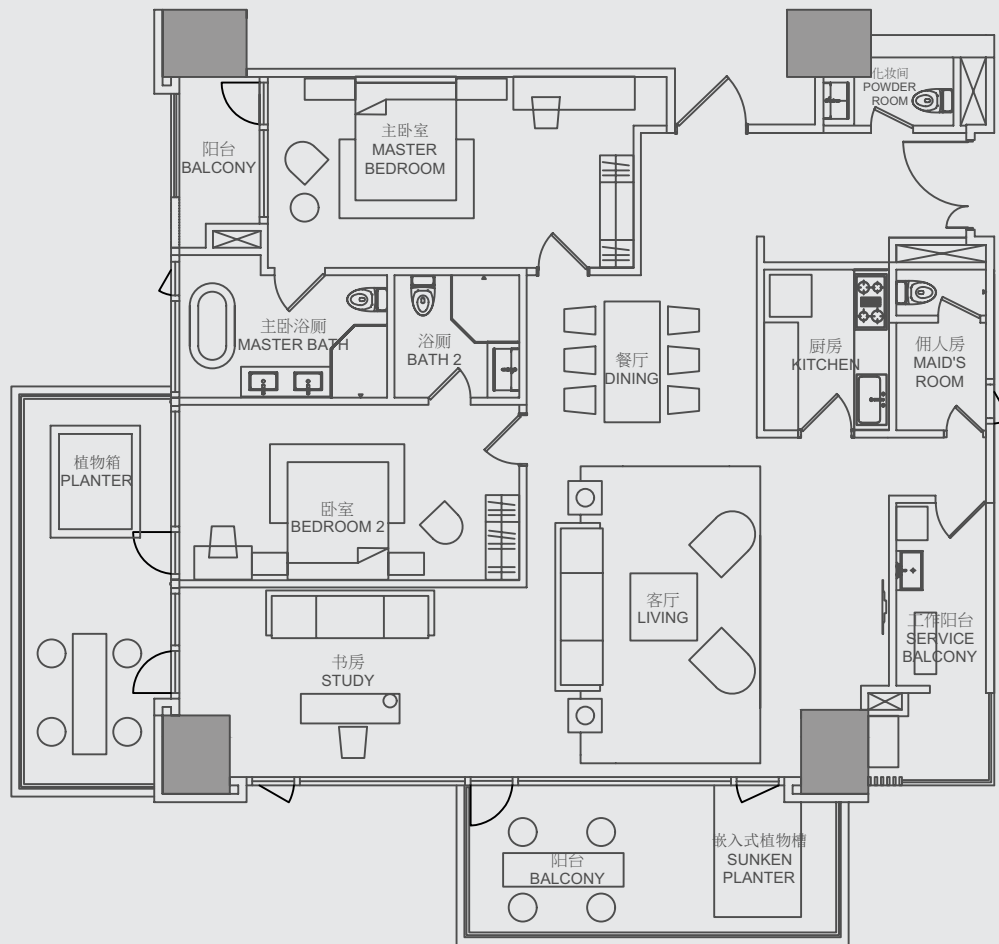
TYPE 类型  
A5(c)

2 ENSUITE BEDROOMS + STUDY  
2 间带浴室套房 + 书房

NETT AREA 室内面积: 221m<sup>2</sup>

GROSS AREA 总面积: 288m<sup>2</sup>

4F | 7F | 10F | 13F | 16F | 19F  
22F | 25F | 28F | 31F



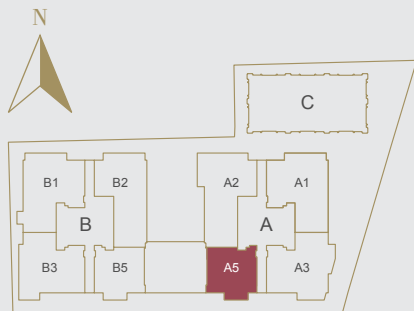
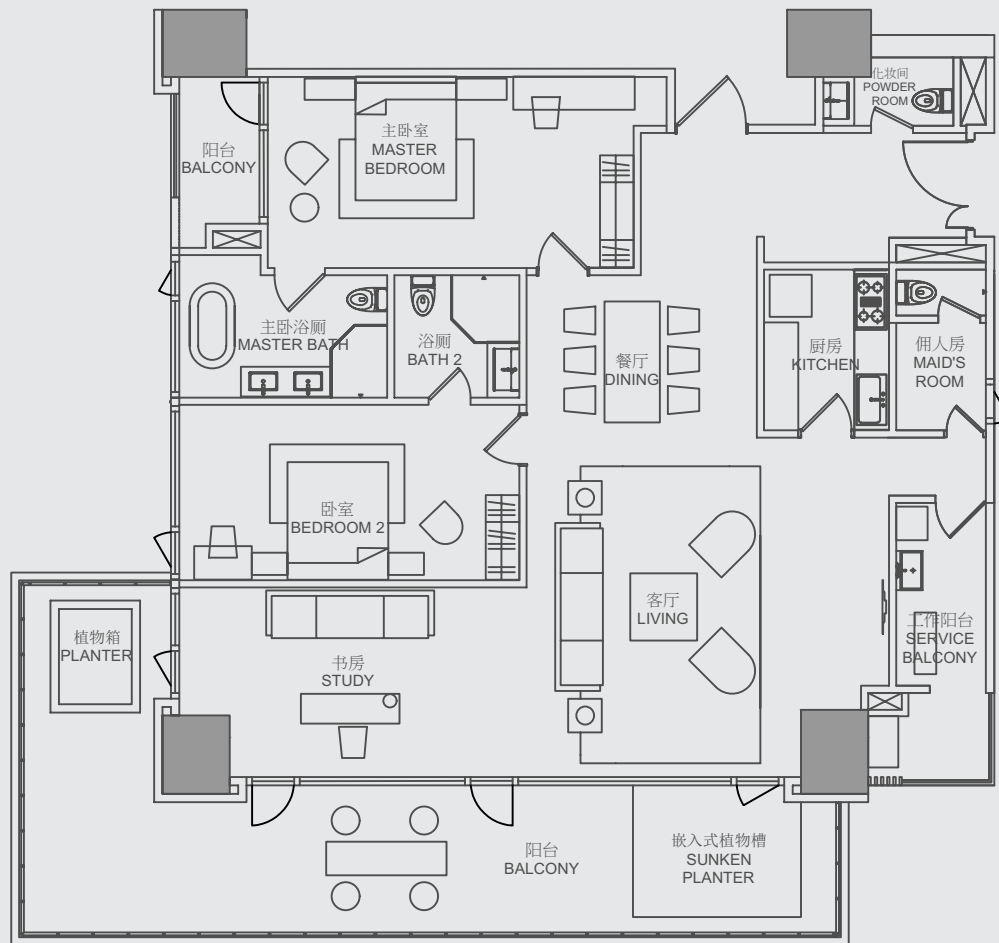
TYPE 类型  
A5(d)

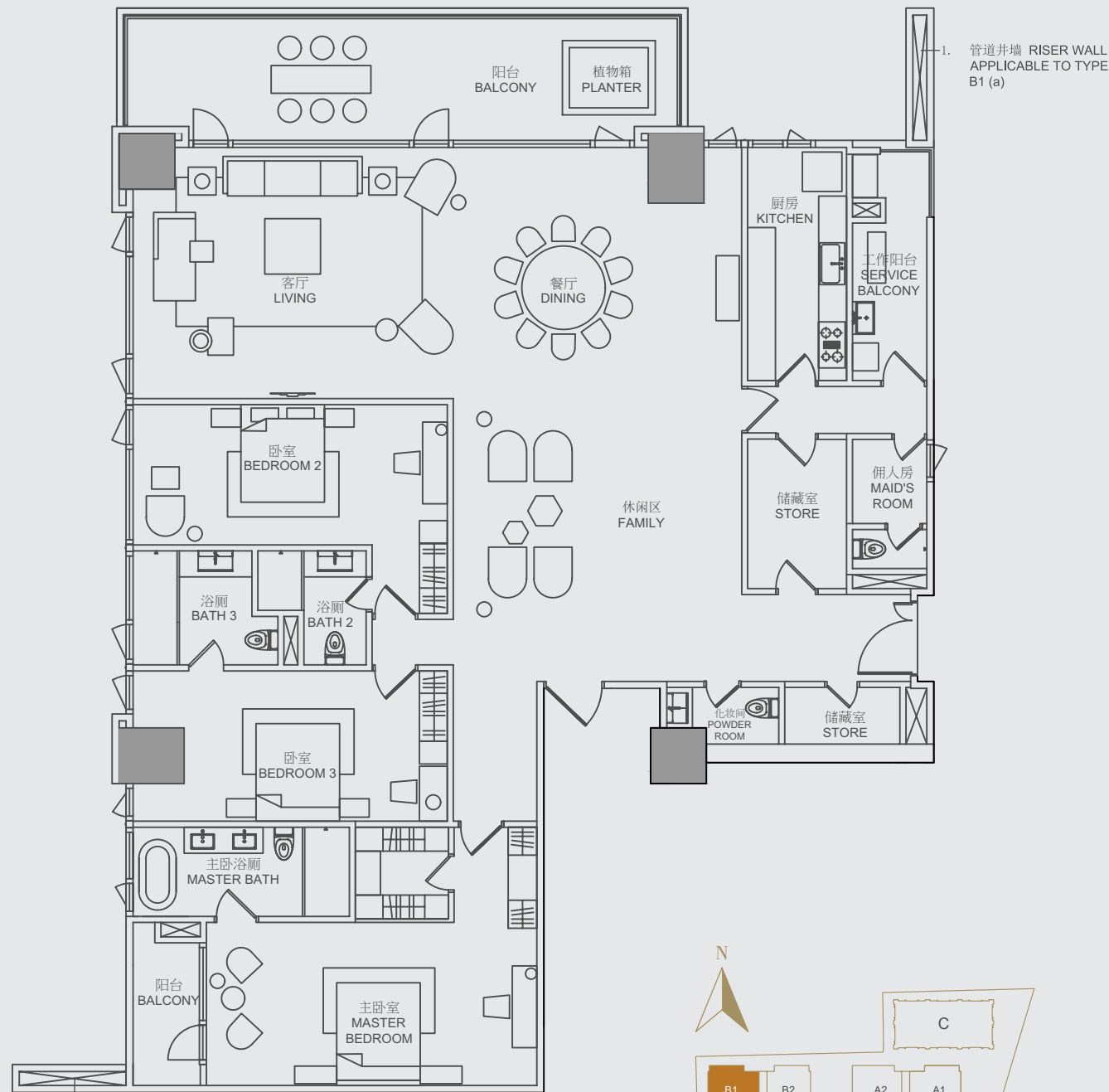
2 ENSUITE BEDROOMS + STUDY  
2 间带浴室套房 + 书房

NETT AREA 室内面积: 233m<sup>2</sup>

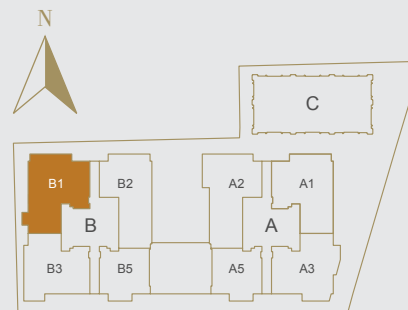
GROSS AREA 总面积: 303m<sup>2</sup>

5F | 8F | 11F | 14F | 17F  
20F | 23F | 26F | 29F | 32F





1. 管道井墙 RISER WALL APPLICABLE TO TYPE B1 (a)



# TYPE 类型 B1(a)

3 ENSUITE BEDROOMS + FAMILY  
3 间带浴室套房 + 家庭房

NETT AREA 室内面积: 320m<sup>2</sup>

GROSS AREA 总面积: 417m<sup>2</sup>

2F | 32F

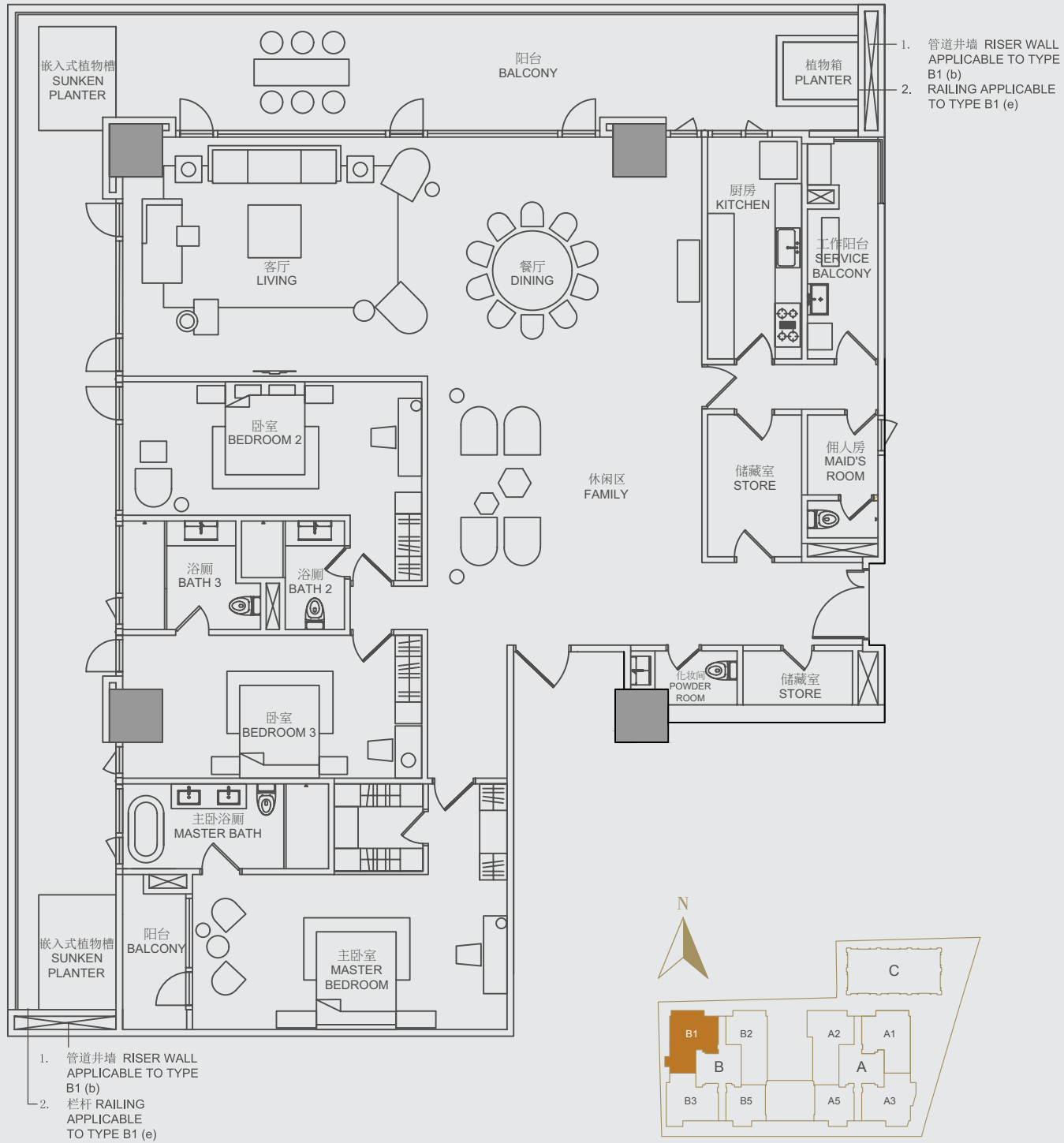
# TYPE 类型 B1(c)

3 ENSUITE BEDROOMS + FAMILY  
3 间带浴室套房 + 家庭房

NETT AREA 室内面积: 320m<sup>2</sup>

GROSS AREA 总面积: 417m<sup>2</sup>

4F | 6F | 8F | 10F | 14F | 16F | 18F  
20F | 24F | 26F | 28F | 30F



# TYPE 类型 B1(b)

3 ENSUITE BEDROOMS + FAMILY  
3 间带浴室套房 + 家庭房

NETT AREA 室内面积: 386m<sup>2</sup>

GROSS AREA 总面积: 498m<sup>2</sup>

3F | 13F | 22F

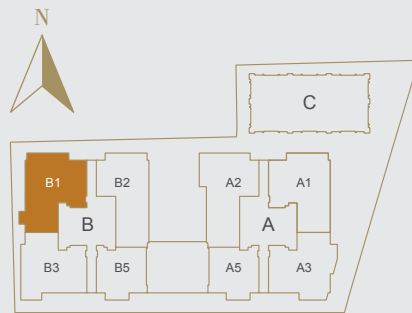
# B1(e)

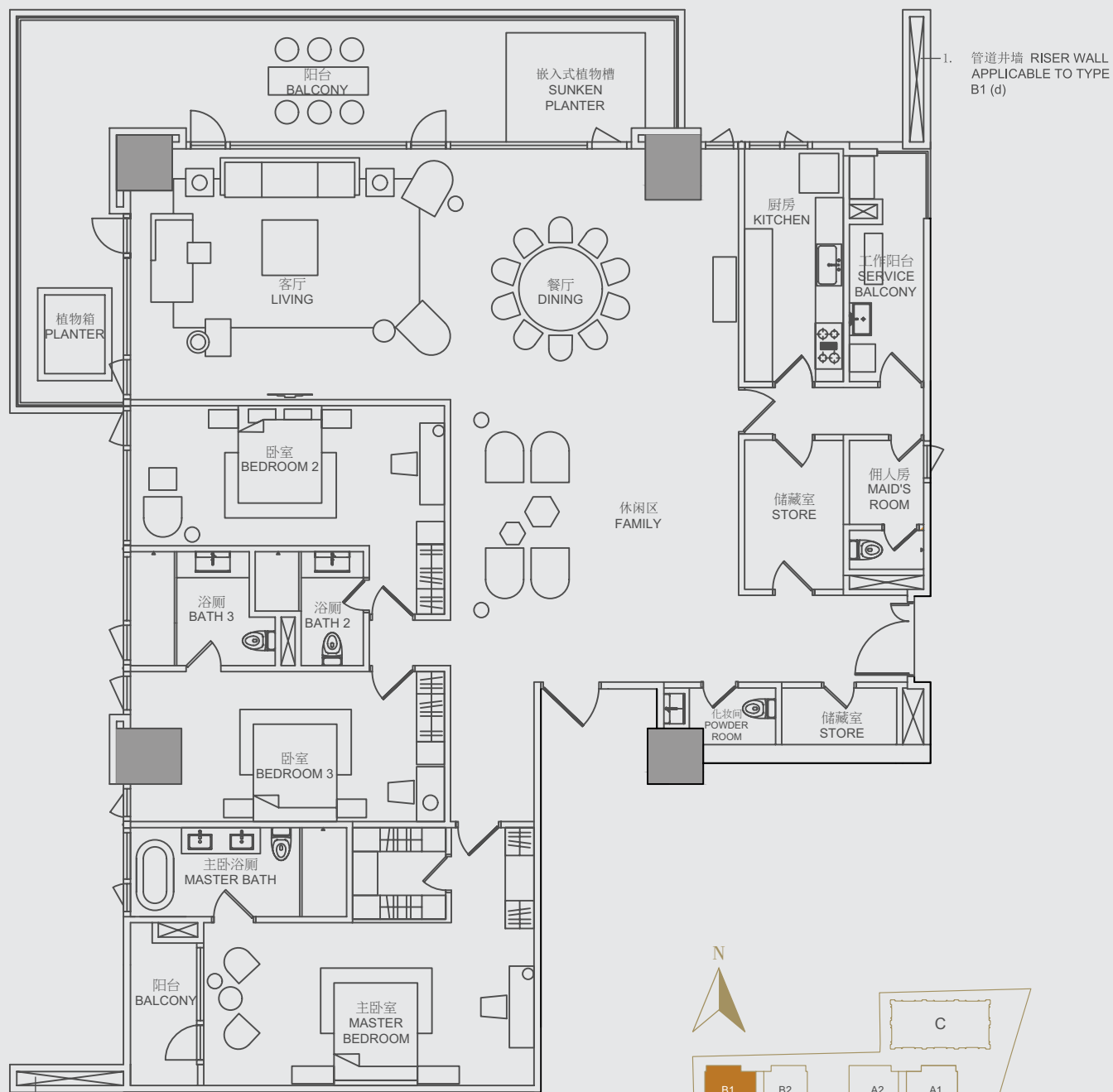
3 ENSUITE BEDROOMS + FAMILY  
3 间带浴室套房 + 家庭房

NETT AREA 室内面积: 386m<sup>2</sup>

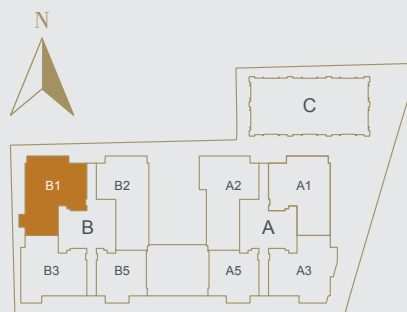
GROSS AREA 总面积: 498m<sup>2</sup>

12F | 21F | 31F





1. 管道井墙 RISER WALL  
APPLICABLE TO TYPE  
B1 (d)



# TYPE 类型 B1(d)

3 ENSUITE BEDROOMS + FAMILY  
3 间带浴室套房 + 家庭房

NETT AREA 室内面积: 339m<sup>2</sup>

GROSS AREA 总面积: 442m<sup>2</sup>

5F | 7F | 9F | 11F | 15F | 17F  
19F | 23F | 25F | 27F | 29F

# TYPE 类型 B1(f)

3 ENSUITE BEDROOMS + FAMILY  
3 间带浴室套房 + 家庭房

NETT AREA 室内面积: 339m<sup>2</sup>

GROSS AREA 总面积: 442m<sup>2</sup>

33F



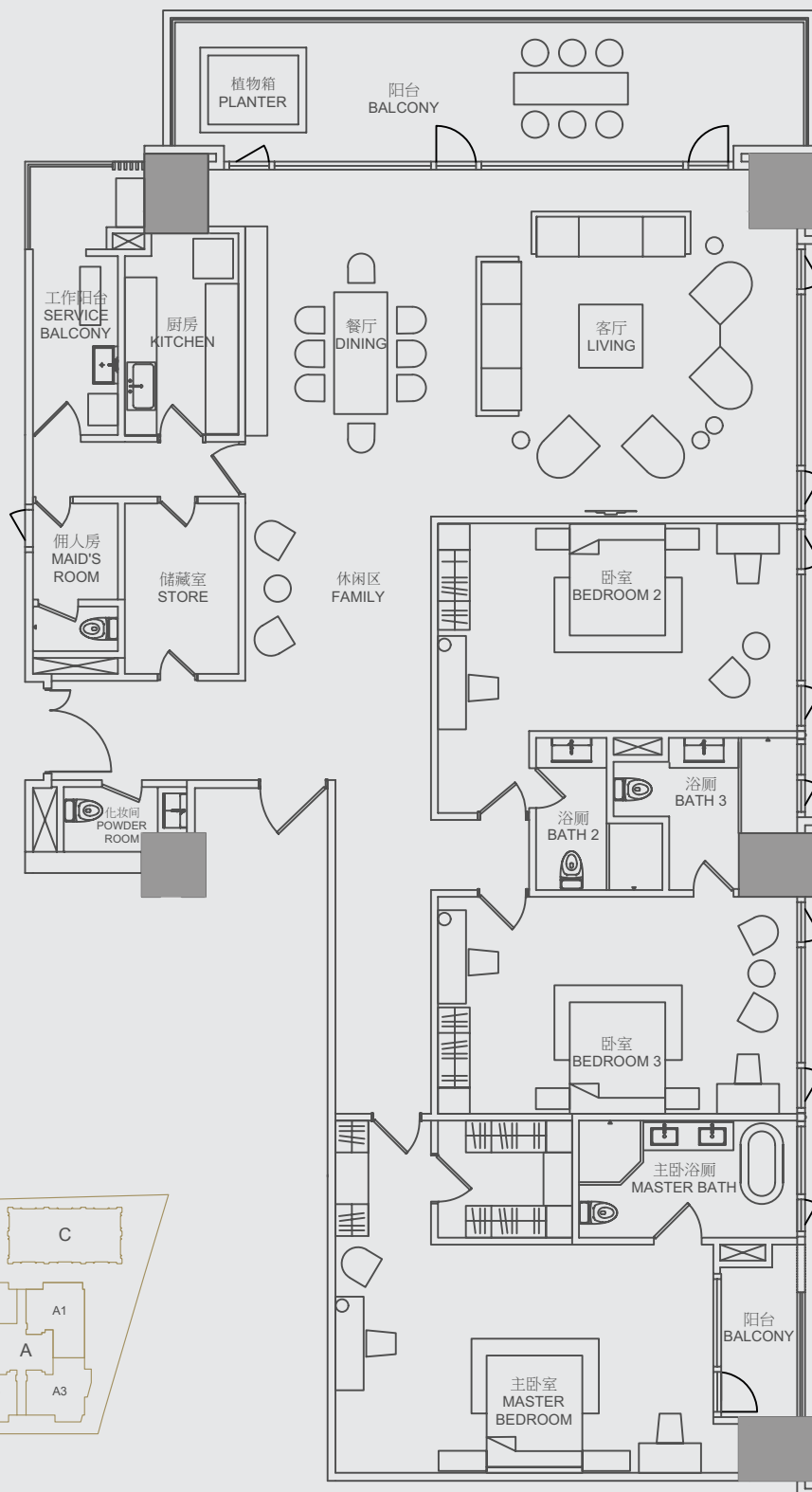
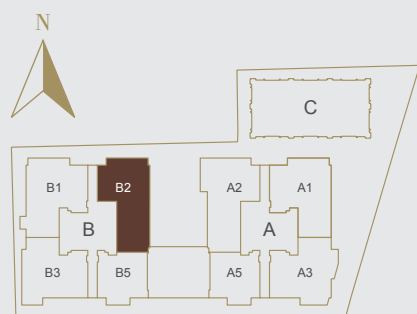
# TYPE 类型 B2(a)

3 ENSUITE BEDROOMS + FAMILY  
3 间带浴室套房 + 家庭房

NETT AREA 室内面积: 324m<sup>2</sup>

GROSS AREA 总面积: 423m<sup>2</sup>

2F | 5F | 8F | 11F | 14F | 17F  
20F | 23F | 26F | 29F | 32F



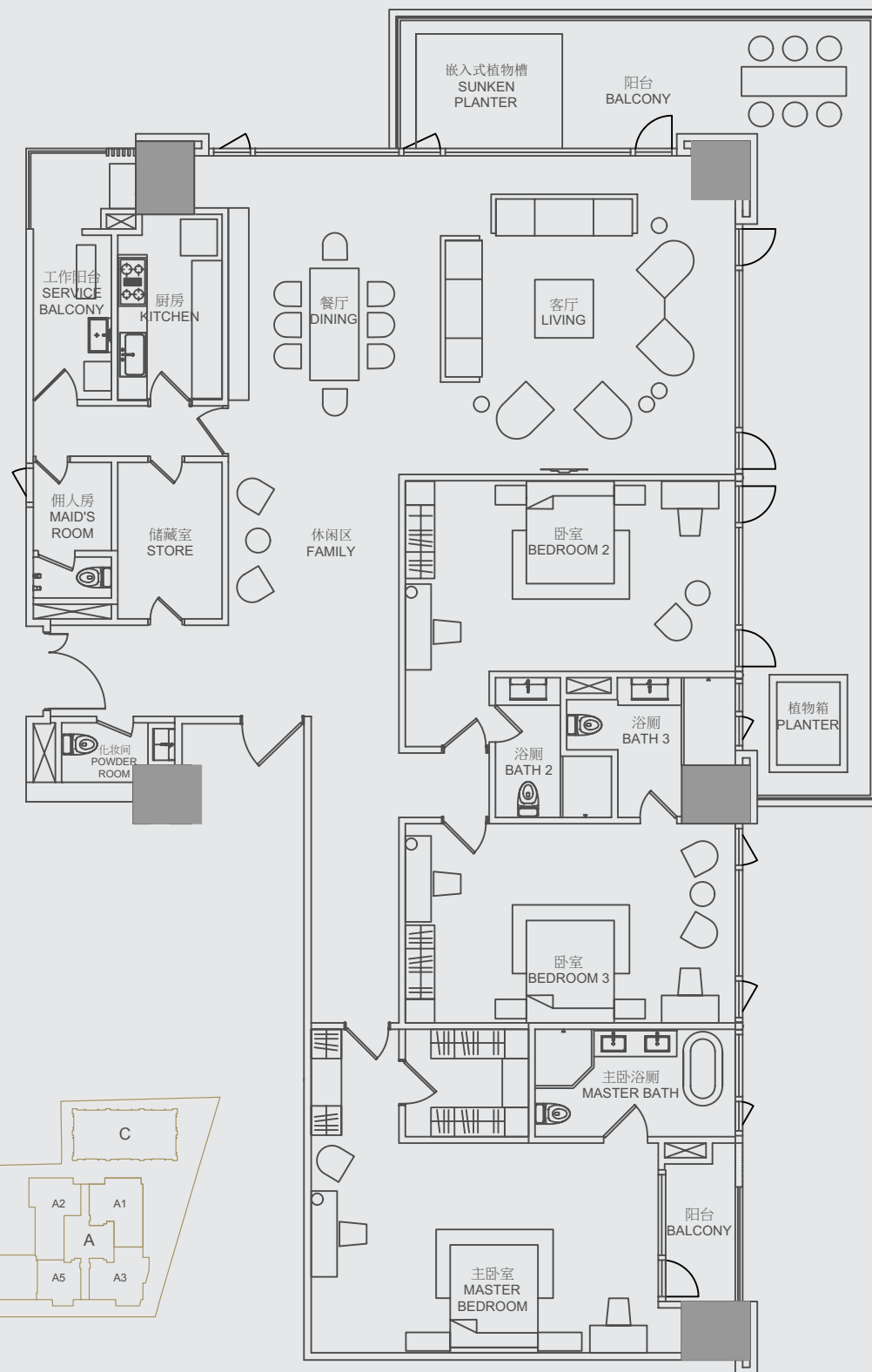
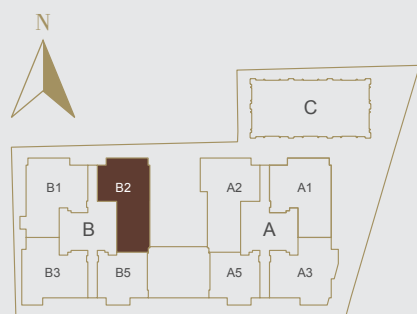
# TYPE 类型 B2(b)

3 ENSUITE BEDROOMS + FAMILY  
3 间带浴室套房 + 家庭房

NETT AREA 室内面积: 353m<sup>2</sup>

GROSS AREA 总面积: 458m<sup>2</sup>

3F | 6F | 9F | 12F | 15F | 18F  
21F | 24F | 27F | 30F



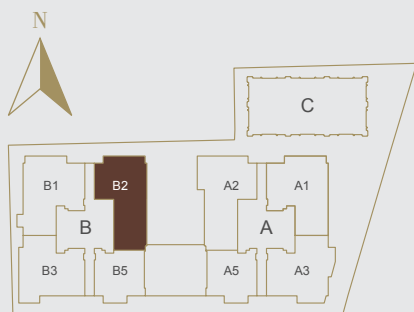
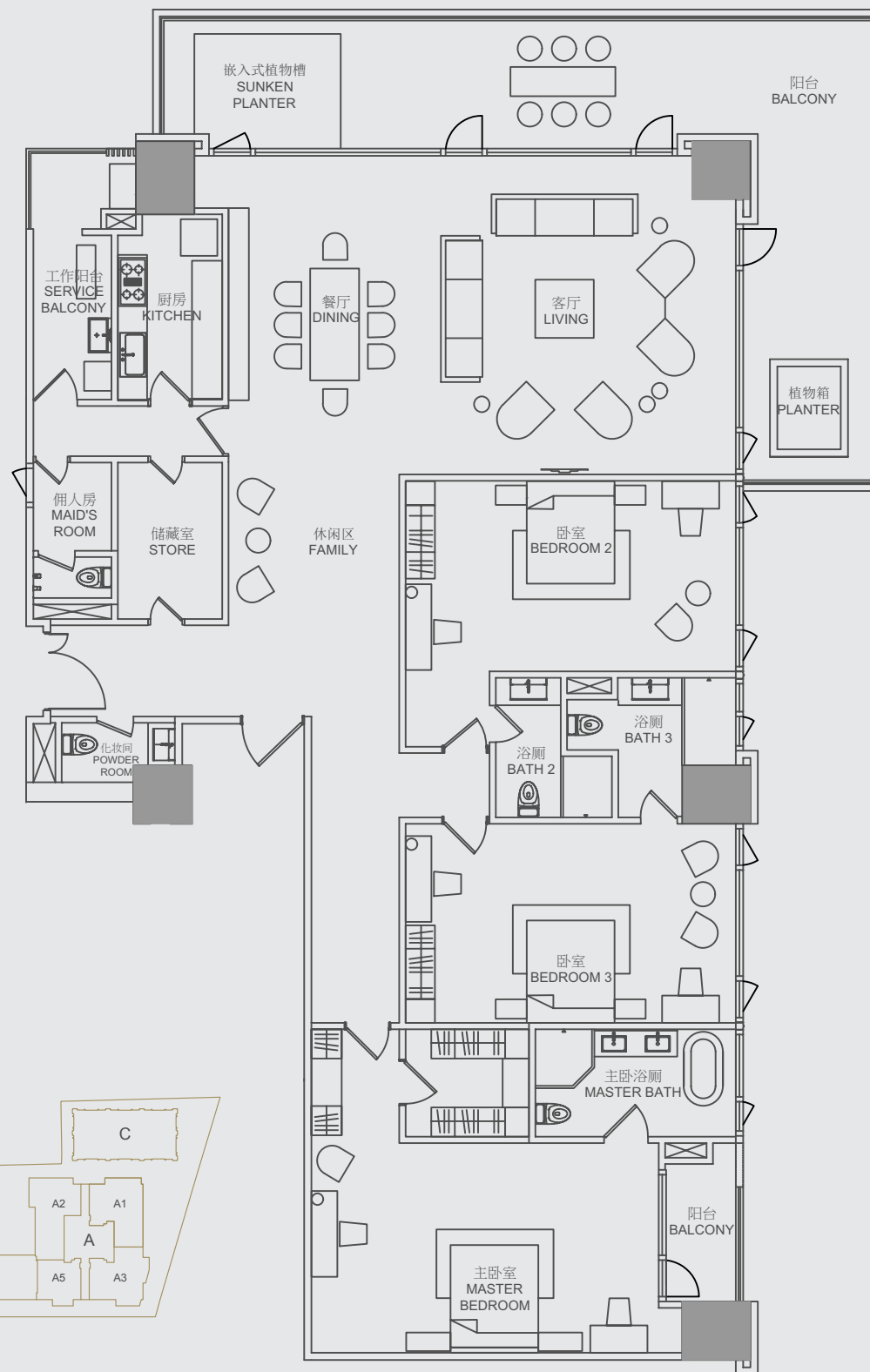
TYPE 类型  
**B2(c)**

3 ENSUITE BEDROOMS + FAMILY  
 3间带浴室套房 + 家庭房

NETT AREA 室内面积: 349m<sup>2</sup>

GROSS AREA 总面积: 453m<sup>2</sup>

4F | 7F | 10F | 13F | 16F | 19F  
 22F | 25F | 28F | 31F | 33F



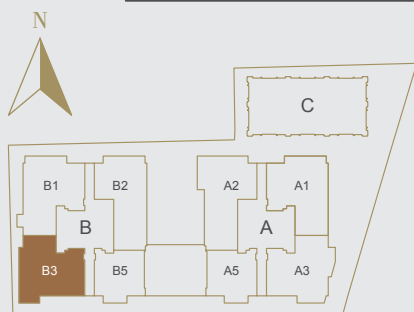
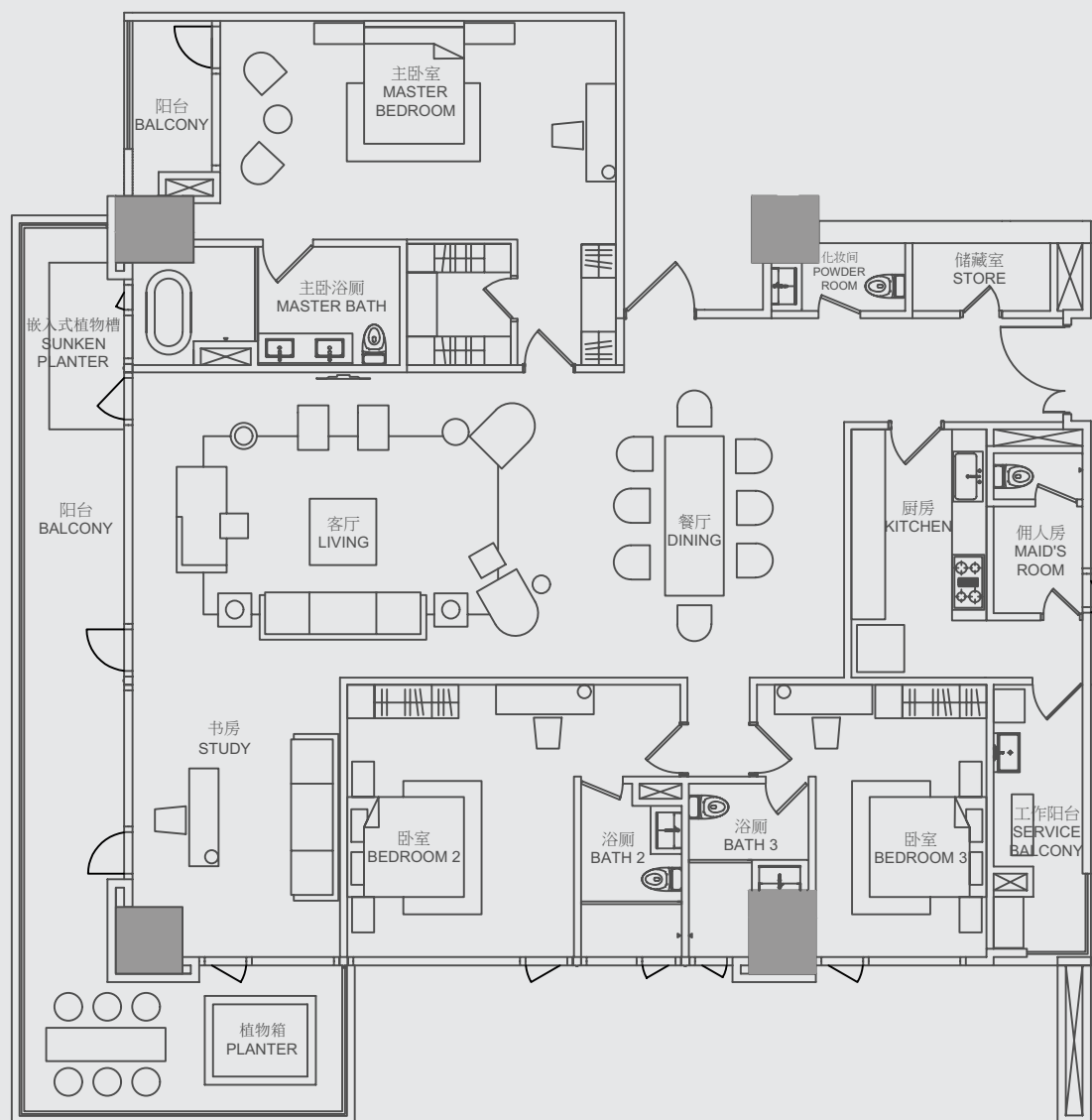
TYPE 类型  
**B3(a)**

3 ENSUITE BEDROOMS + STUDY  
 3间带浴室套房 + 书房

NETT AREA 室内面积: 299m<sup>2</sup>

GROSS AREA 总面积: 390m<sup>2</sup>

2F | 6F | 8F | 12F | 14F | 16F | 18F  
 20F | 24F | 26F | 30F | 32F



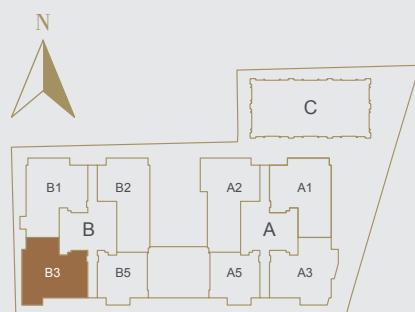
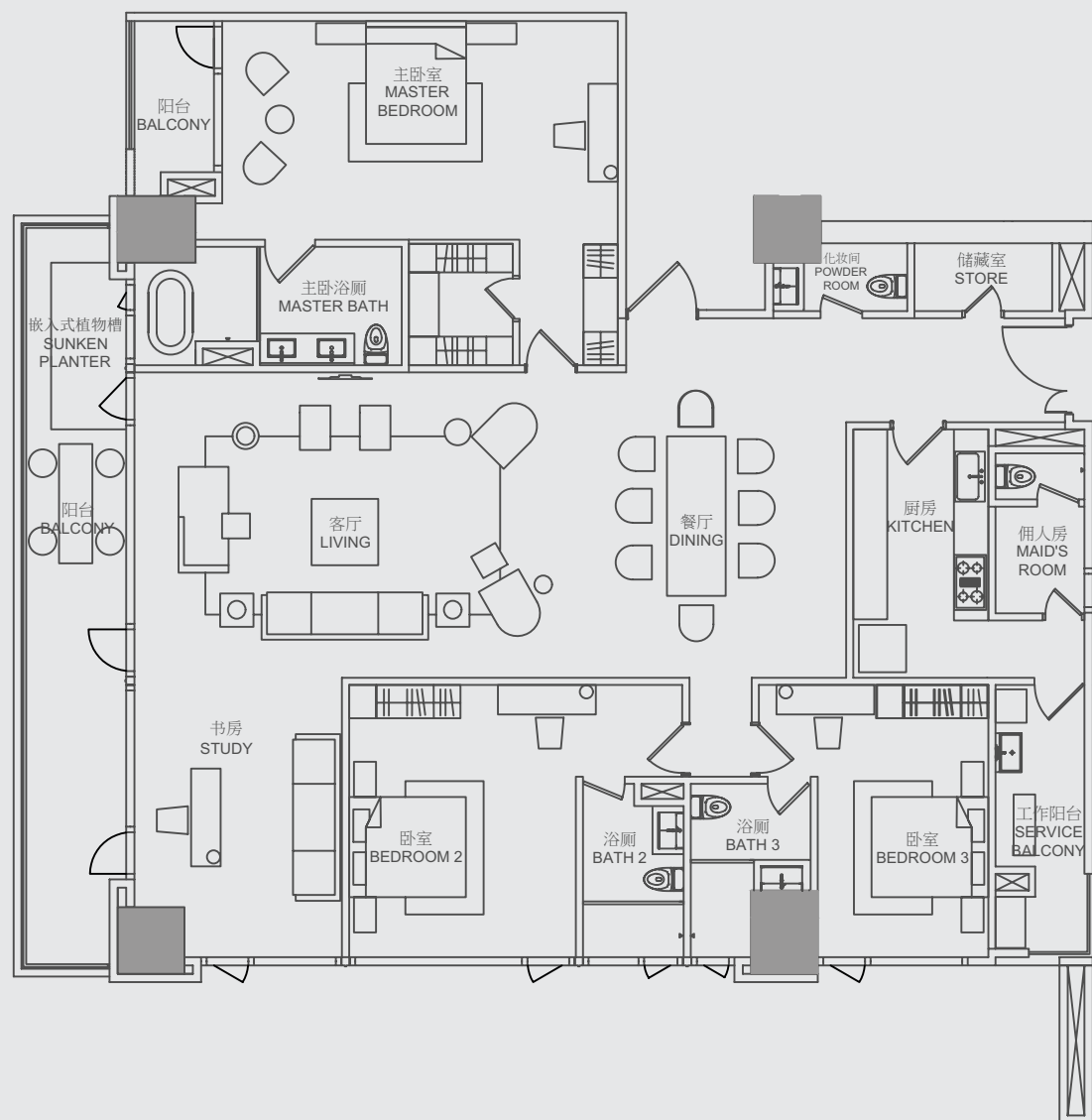
# TYPE 类型 B3(b)

3 ENSUITE BEDROOMS + STUDY  
3 间带浴室套房 + 书房

NETT AREA 室内面积: 283m<sup>2</sup>

GROSS AREA 总面积: 369m<sup>2</sup>

3F | 5F | 7F | 9F | 15F | 17F  
23F | 25F | 27F | 29F | 31F | 33F



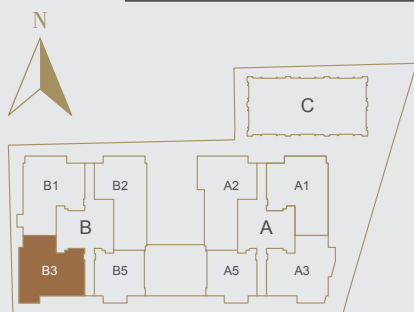
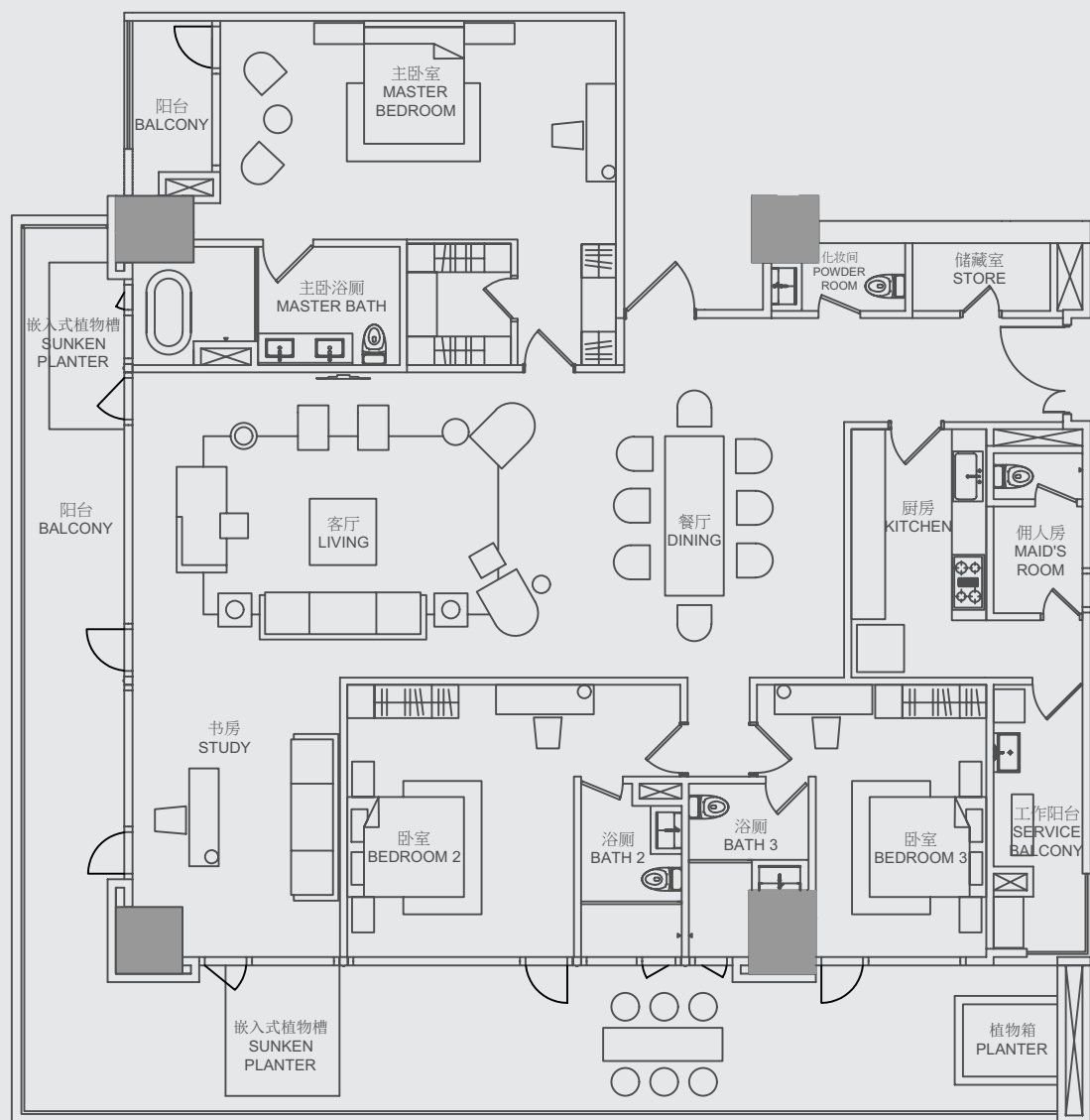
TYPE 类型  
**B3(c)**

3 ENSUITE BEDROOMS + STUDY  
 3间带浴室套房 + 书房

NETT AREA 室内面积: 333m<sup>2</sup>

GROSS AREA 总面积: 431m<sup>2</sup>

4F | 10F | 13F | 19F | 22F | 28F



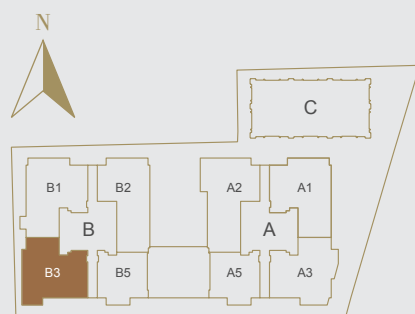
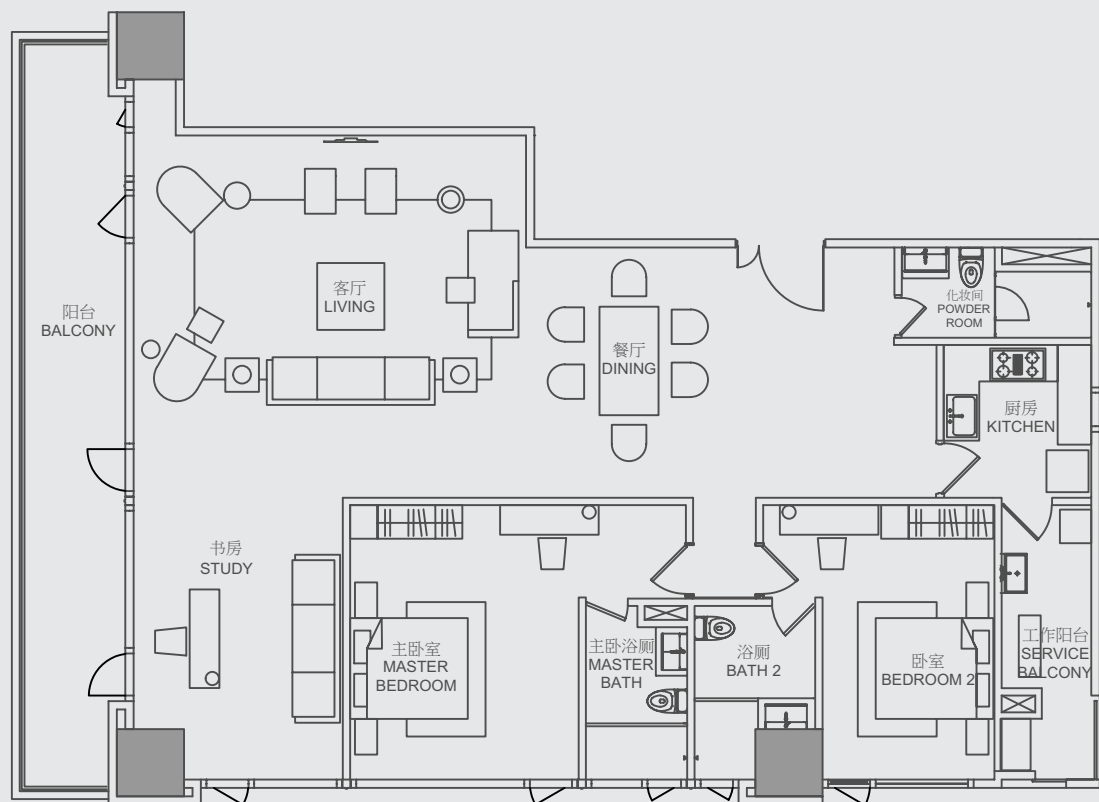
# TYPE 类型 B3(d)

2 ENSUITE BEDROOMS + STUDY  
2 间带浴室套房 + 书房

NETT AREA 室内面积: 210m<sup>2</sup>

GROSS AREA 总面积: 272m<sup>2</sup>

11F | 21F



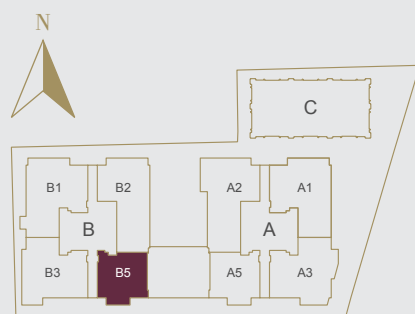
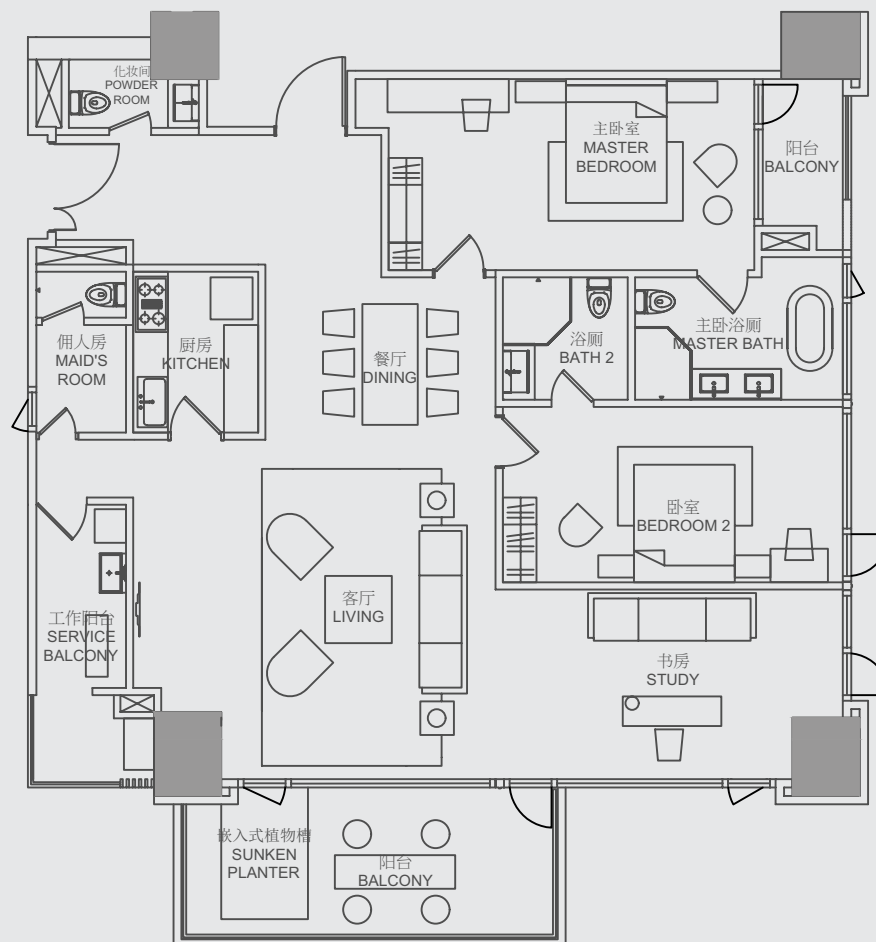
TYPE 类型  
**B5(a)**

2 ENSUITE BEDROOMS + STUDY  
 2 间带浴室套房 + 书房

NETT AREA 室内面积: 259m<sup>2</sup>

GROSS AREA 总面积: 336m<sup>2</sup>

2F





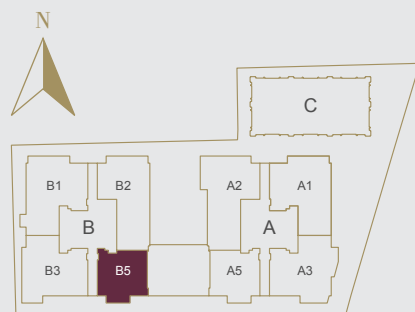
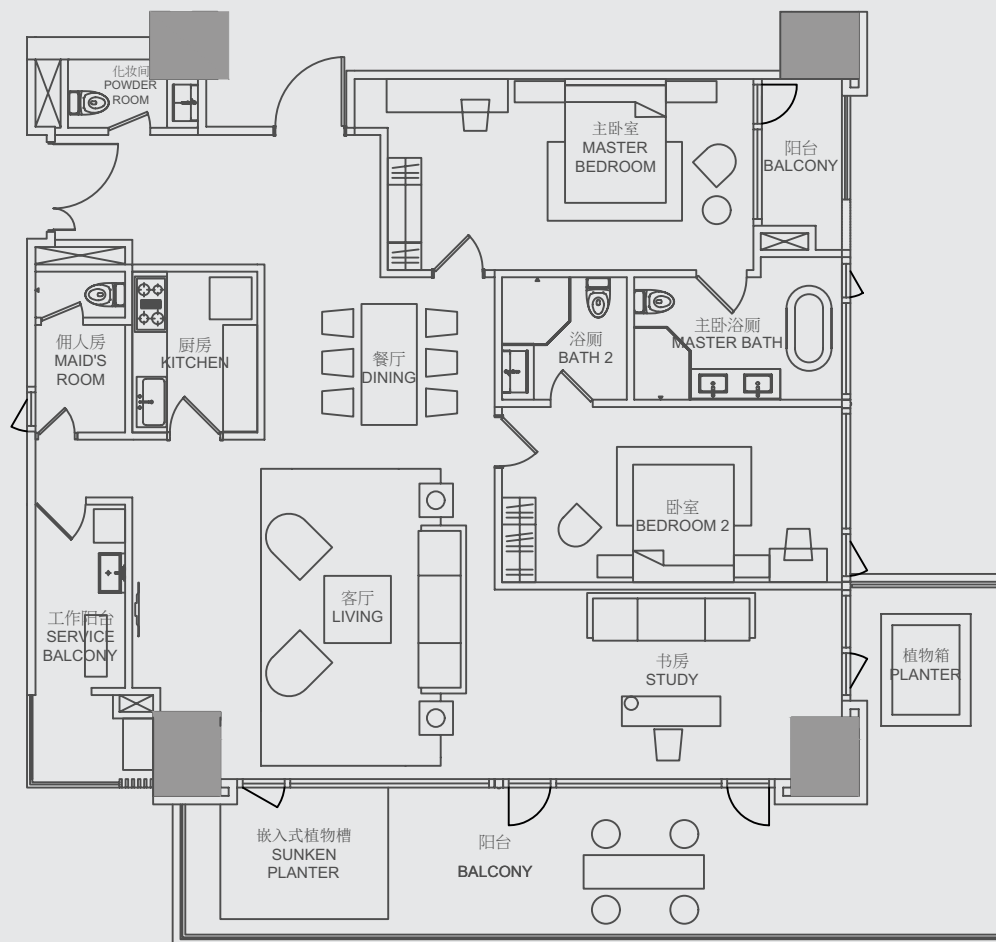
TYPE 类型  
**B5(b)**

2 ENSUITE BEDROOMS + STUDY  
 2 间带浴室套房 + 书房

NETT AREA 室内面积: 233m<sup>2</sup>

GROSS AREA 总面积: 303m<sup>2</sup>

3F | 6F | 9F | 12F | 15F | 18F  
 21F | 24F | 27F | 30F | 33F



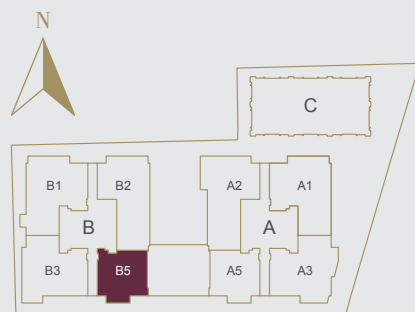
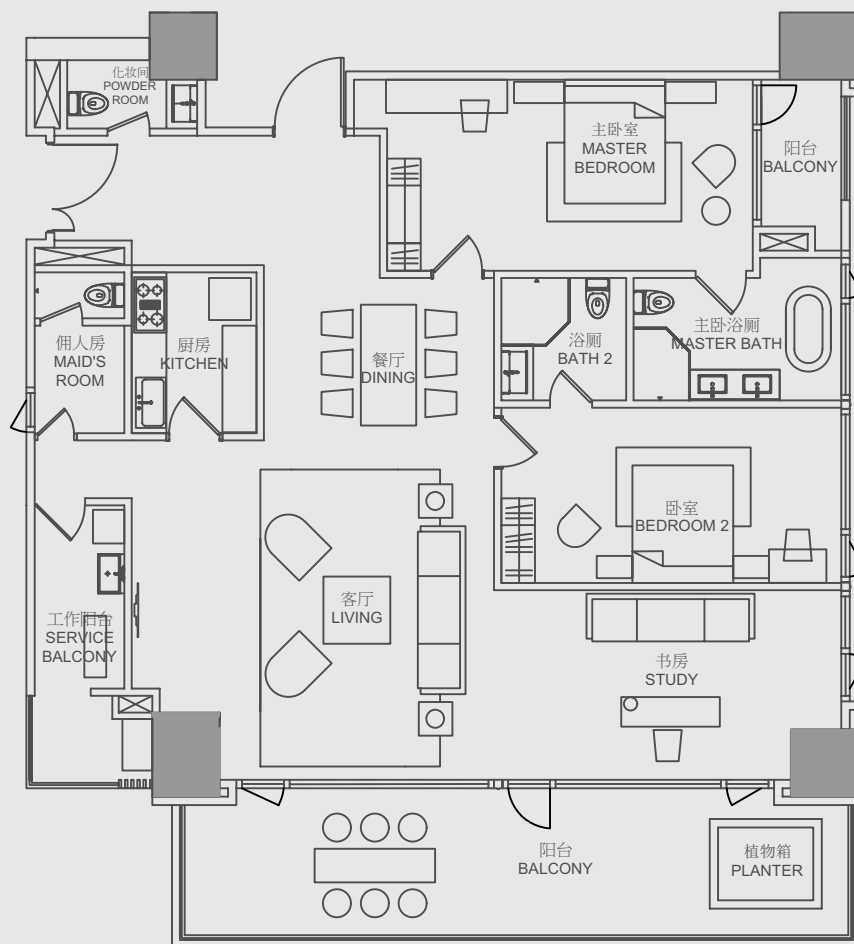
TYPE 类型  
**B5(c)**

2 ENSUITE BEDROOMS + STUDY  
 2 间带浴室套房 + 书房

NETT AREA 室内面积: 216m<sup>2</sup>

GROSS AREA 总面积: 281m<sup>2</sup>

4F | 7F | 10F | 13F | 16F | 19F  
 22F | 25F | 28F | 31F



# TYPE 类型 B5(d)

2 ENSUITE BEDROOMS + STUDY  
2 间带浴室套房 + 书房

NETT AREA 室内面积: 221m<sup>2</sup>

GROSS AREA 总面积: 288m<sup>2</sup>

5F | 8F | 11F | 14F | 17F  
20F | 23F | 26F | 29F | 32F

